

# Core Drilling





## VIEWING OPTIONS:

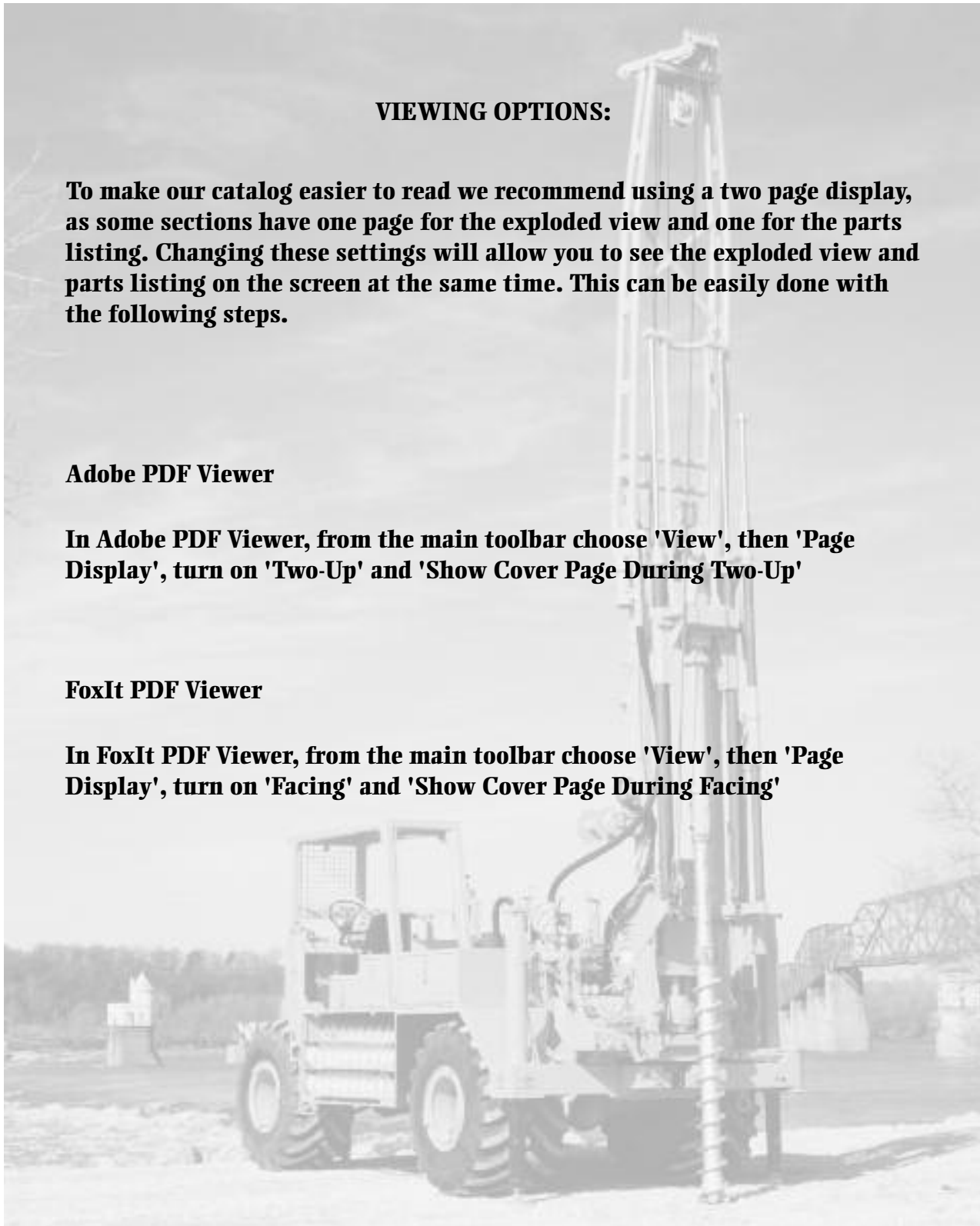
**To make our catalog easier to read we recommend using a two page display, as some sections have one page for the exploded view and one for the parts listing. Changing these settings will allow you to see the exploded view and parts listing on the screen at the same time. This can be easily done with the following steps.**

### **Adobe PDF Viewer**

**In Adobe PDF Viewer, from the main toolbar choose 'View', then 'Page Display', turn on 'Two-Up' and 'Show Cover Page During Two-Up'**

### **FoxIt PDF Viewer**

**In FoxIt PDF Viewer, from the main toolbar choose 'View', then 'Page Display', turn on 'Facing' and 'Show Cover Page During Facing'**



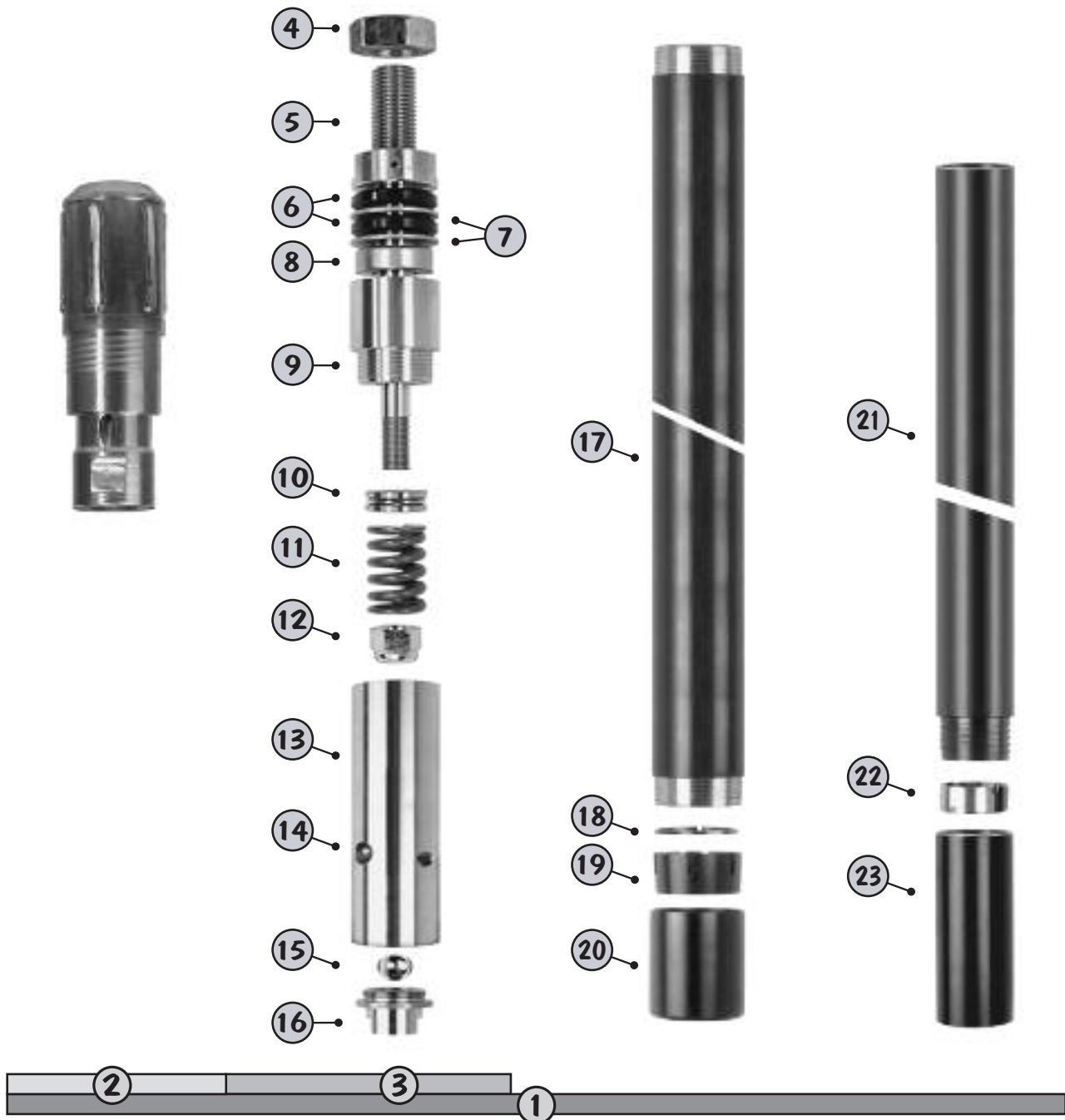


<b>Core Drilling</b> .....	<b>7.1</b>
Casing - W Series Flush Joint .....	7.50
<b>Core Barrels</b>	
<b>Conventional Core Barrels</b>	
NV, NV2, NV3 .....	7.2
HV, HV3 .....	7.8
PV, PV3 .....	7.12
<b>Wireline Core Barrels</b>	
N W/L, N W/L2, N W/L3 .....	7.16
Overshot N W/L .....	7.26
H W/L, H W/L3 .....	7.28
Overshot H W/L .....	7.34
P W/L, P W/L3 .....	7.36
Overshot P W/L .....	7.40
Core Boxes .....	7.65
Drill Rod (Wireline) .....	7.42
Foot Clamp .....	7.63
Insta-Vis Plus .....	7.66
Kwik Klamps.....	7.62
Lubricants & Dope Brush .....	7.66
Punch Shoes .....	7.45
Subs & Adapters .....	7.46
Water Swivels, Side Feed & Bail Type .....	7.52
Wrenches - Full Circle Grip.....	7.64



## CONVENTIONAL CORE BARRELS

### NV Core Barrel





## CONVENTIONAL CORE BARRELS

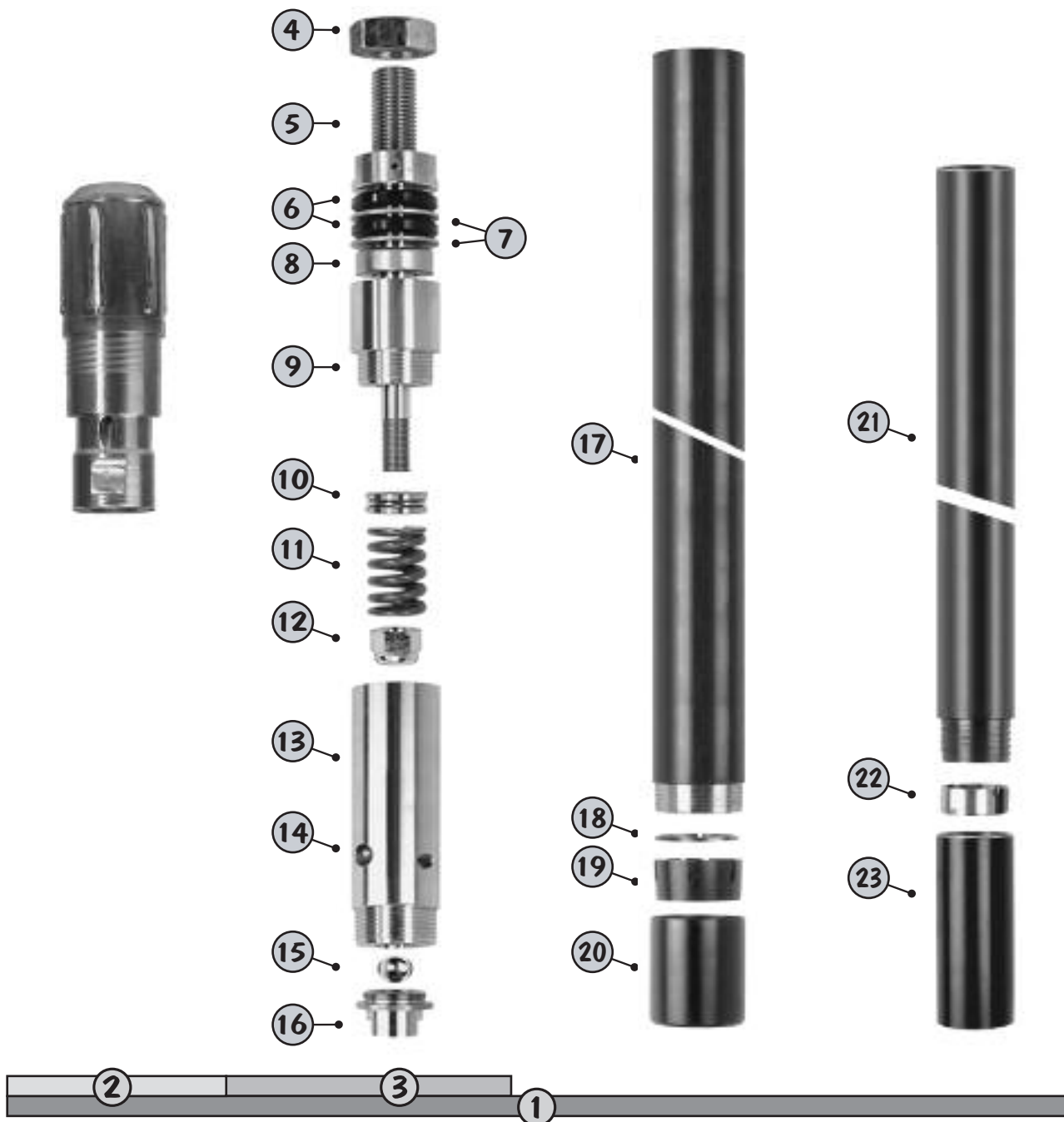
### NV Core Barrel

Ref. No.	Part No.				Description
	5'	10'	5'	10'	
	Chrome plated		Plain		
1	36095	36096	36100	36101	NV Core barrel assembly - NWJ
2	36084	36084	36084	36084	Head
3	37076	37076	37076	37076	Bearing assembly
4	36014	36014	36014	36014	Lock nut
5	36015	36015	36015	36015	Spindle assembly
6	36016	36016	36016	36016	Shut-off valve (2 req'd.)
7	36017	36017	36017	36017	Valve adjusting washer (2 req'd.)
8	36018	36018	36018	36018	Ball thrust bearing
9	36019	36019	36019	36019	Spindle bearing
10	36020	36020	36020	36020	Hanger bearing
11	36021	36021	36021	36021	Compression spring
12	36022	36022	36022	36022	Self lock nut
13	36023	36023	36023	36023	Inner tube cap assembly
14	36024	36024	36024	36024	Grease fitting
15	36025	36025	36025	36025	Steel ball
16	36026	36026	36026	36026	Check valve body
17	36034	36035	36110	36111	Inner tube
18	36036	36036	36036	36036	Stop ring
19	36037	36037	36037	36037	Core lifter (Standard)
19	36038	36038	36038	36038	Core lifter (Broached)
20	36039	36039	36039	36039	Core lifter case
21	36044	36045	36129	36130	Outer tube
22	36046	36046	36046	36046	IT stabilizer
23	36047	36047	36047	36047	Thread protector
<p><b>NOTE:</b> All barrels have NWJ box connection. Sub required for other rod sizes.            If chrome plated, approximately 12" on either end of the outer tube &amp; full length of the inner tube I.D.            NV Core barrel assembly does not include reamer shell or bit. (See Diamond Bit section)</p>					



## CONVENTIONAL CORE BARRELS

### NV 2 Core Barrel





## CONVENTIONAL CORE BARRELS

### NV 2 Core Barrel

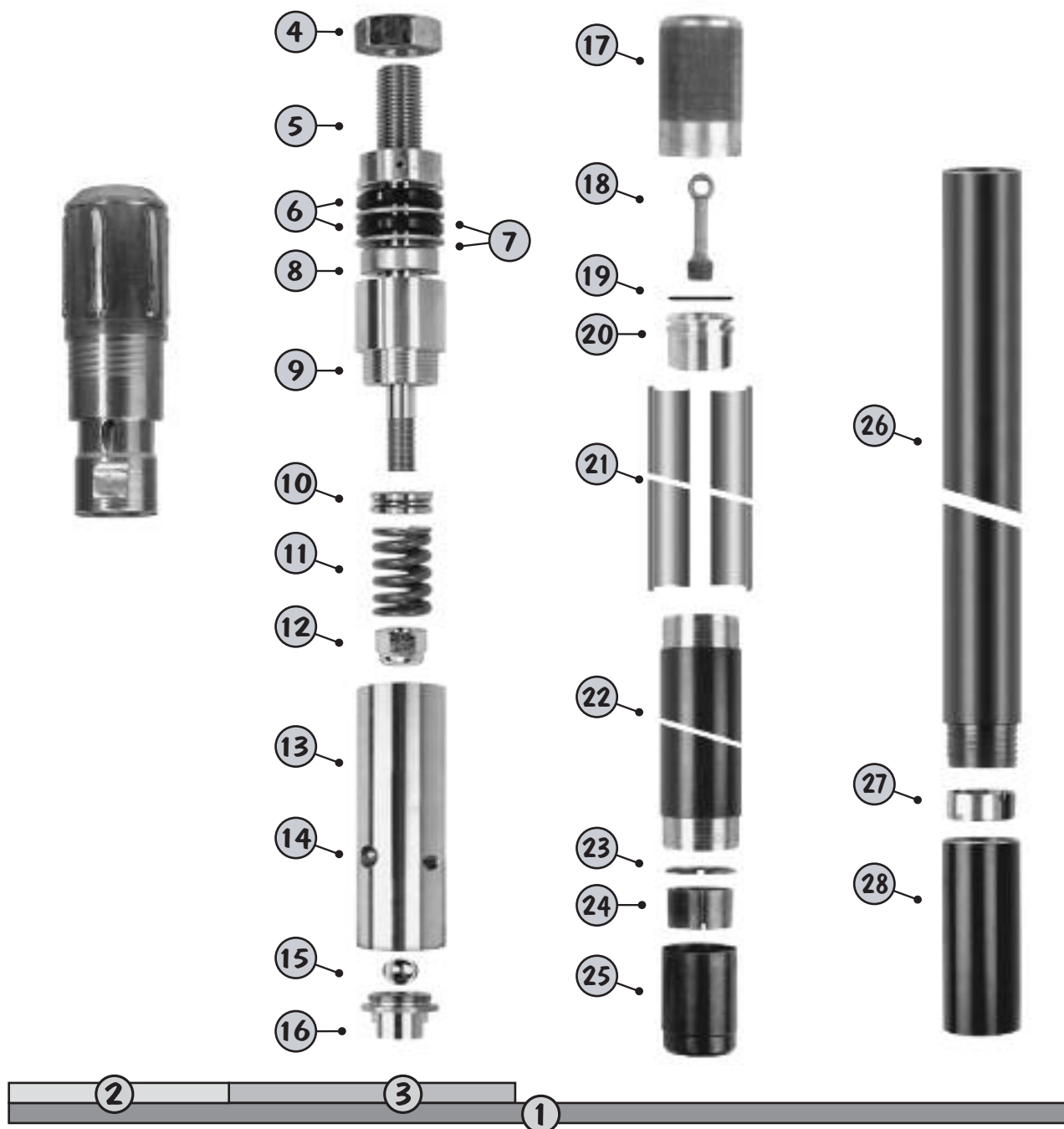
Ref. No.	Part No.				Description
	5'	10'	5'	10'	
	Chrome plated		Plain		
1	36082	36083	36102	36103	NV 2 Core barrel assembly - NWJ
2	36084	36084	36084	36084	Head
3	37077	37077	37077	37077	Bearing assembly
4	36014	36014	36014	36014	Lock nut
5	36015	36015	36015	36015	Spindle assembly
6	36016	36016	36016	36016	Shut-off valve (2 req'd.)
7	36017	36017	36017	36017	Valve adjusting washer (2 req'd.)
8	36018	36018	36018	36018	Ball thrust bearing
9	36019	36019	36019	36019	Spindle bearing
10	36020	36020	36020	36020	Hanger bearing
11	36021	36021	36021	36021	Compression spring
12	36022	36022	36022	36022	Self lock nut
13	36074	36074	36074	36074	Inner tube cap assembly
14	36024	36024	36024	36024	Grease fitting
15	36025	36025	36025	36025	Steel ball
16	36026	36026	36026	36026	Check valve body
17	36075	36076	36112	36113	Inner tube
18	36077	36077	36077	36077	Stop ring
19	36078	36078	36078	36078	Core lifter (Standard)
19	36090	36090	36090	36090	Core lifter (Broached)
20	36079	36079	36079	36079	Core lifter case
21	36044	36045	36129	36130	Outer tube
22	36081	36081	36081	36081	IT stabilizer
23	36047	36047	36047	36047	Thread protector
	36124	36246	36124	36246	Inner tube extentions

NOTE: All barrels have NWJ box connection. Sub required for other rod sizes. If chrome plated, approximately 12" on either end of the outer tube & full length of the inner tube I.D. NV2 Core barrel assembly does not include reamer shell or bit. (See Diamond Bit section)



## CONVENTIONAL CORE BARRELS

### NV 3 Core Barrel





## CONVENTIONAL CORE BARRELS

### NV 3 Core Barrel

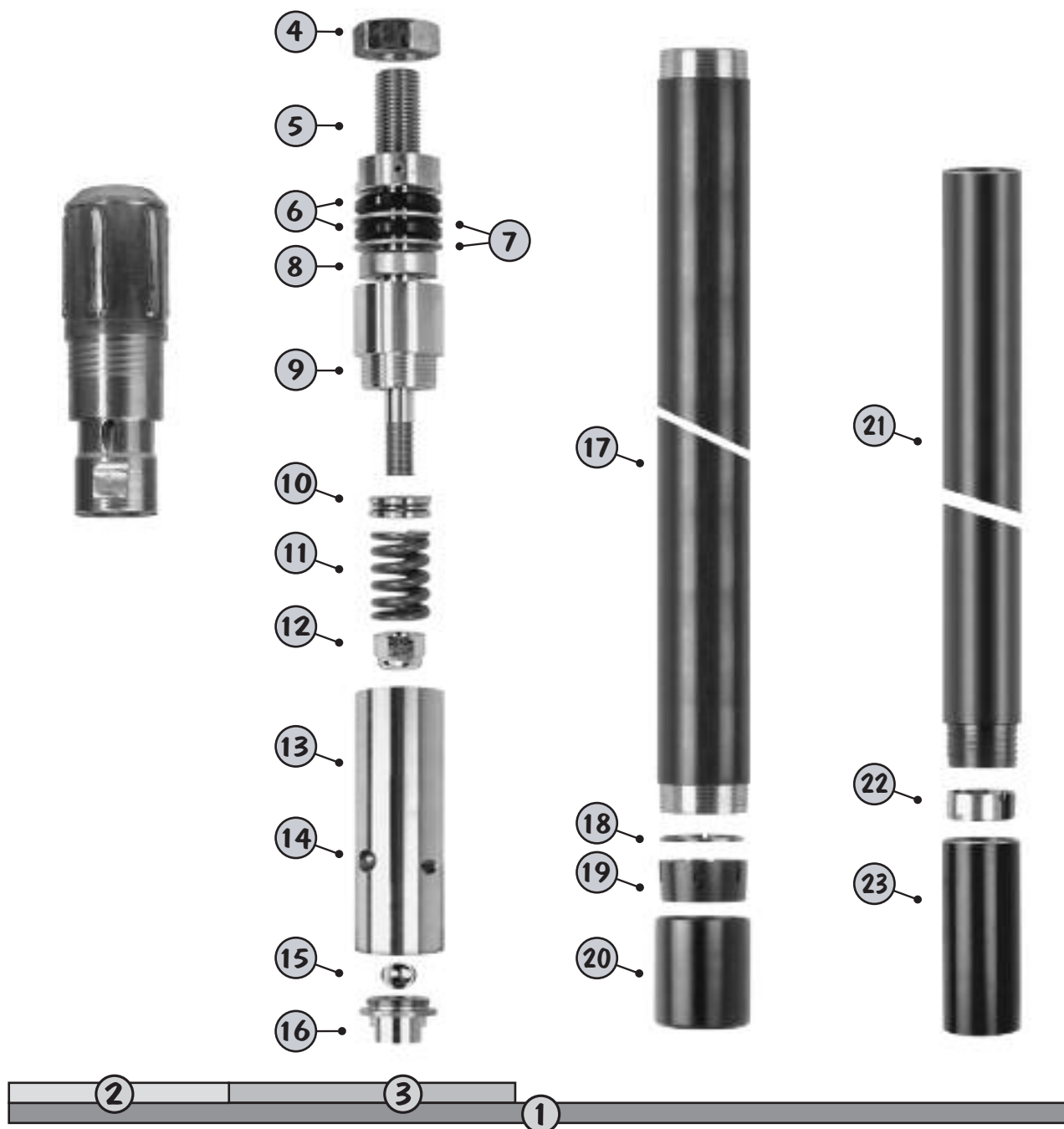
Ref. No.	Part No.		Description	Ref. No.	Part No.		Description
	5'	10'			5'	10'	
1	36104	36105	NV 3 Core barrel assembly - NWJ	21	36114	36115	Split tube liner
2	36084	36084	Head	22	36110	36111	Inner tube
3	37076	37076	Bearing assembly	23	36116	36116	Stop ring
4	36014	36014	Lock nut	24	36117	36117	Core lifter (Standard)
5	36015	36015	Spindle assembly	24	36118	36118	Core lifter (Broached)
6	36016	36016	Shut-off valve (2 req'd.)	25	36119	36119	Core lifter case
7	36017	36017	Valve adjusting washer (2 req'd.)	26	36129	36130	Outer tube
7	36018	36018	Ball thrust bearing	27	36046	36046	IT stabilizer
9	36019	36019	Spindle bearing	28	36047	36047	Thread protector
10	36020	36020	Hanger bearing				
11	36021	36021	Compression spring				
12	36022	36022	Self lock nut				
13	36023	36023	Inner tube cap assembly				
14	36024	36024	Grease fitting				
15	36025	36025	Steel ball				
16	36026	36026	Check valve body				
17	36122	36122	Adapter				
18	36123	36123	Piston plug				
19	36121	36121	"O" ring				
20	36120	36120	Piston				

**NOTE:** All barrels have NWJ box connection. Sub required for other rod sizes.  
 NV 3 Core barrel assembly does not include reamer shell or bit. (See *Diamond Bit section*)



## CONVENTIONAL CORE BARRELS

### HV Core Barrel





## CONVENTIONAL CORE BARRELS

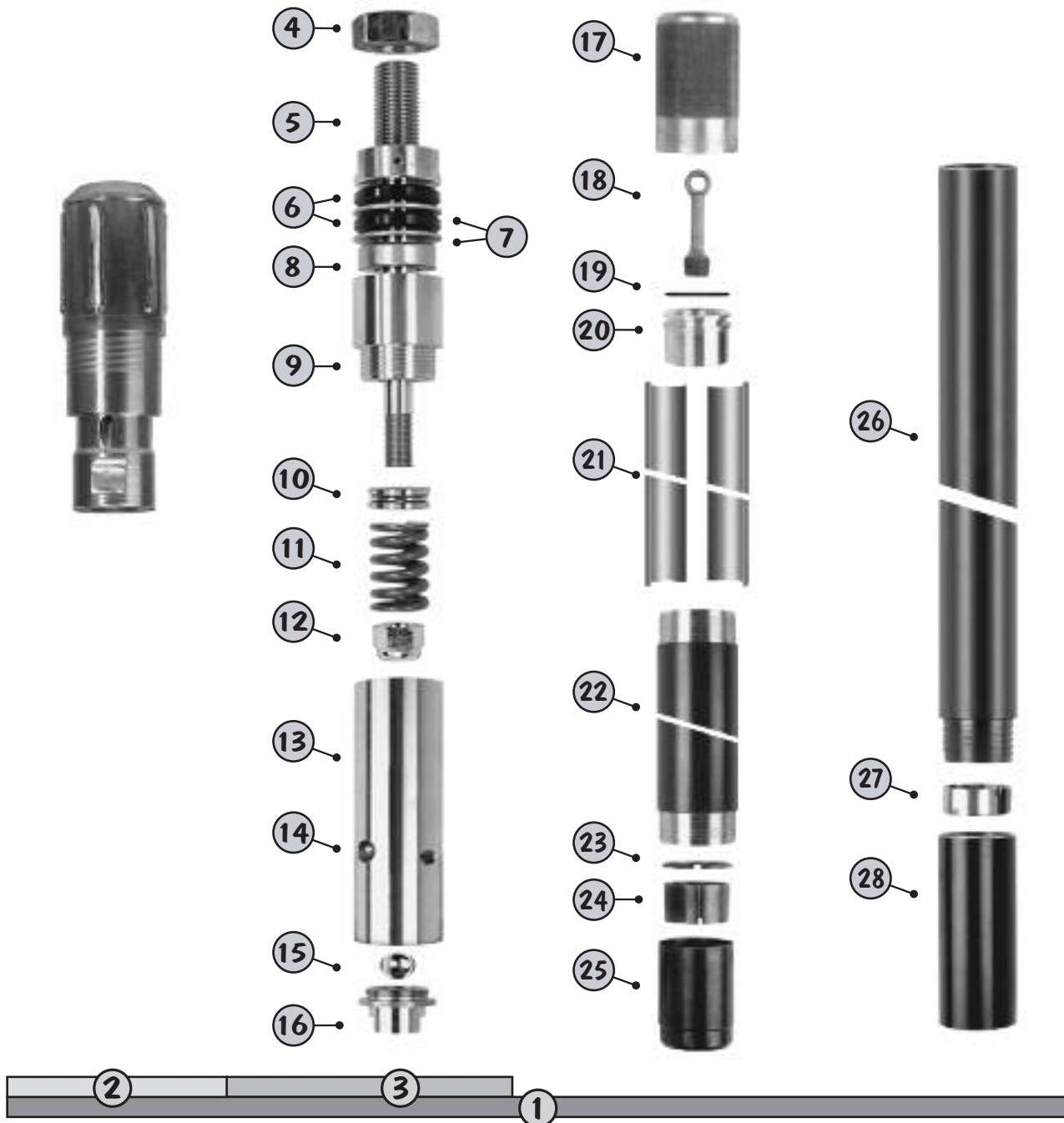
### HV Core Barrel

Ref. No.	Part No.				Description
	5'	10'	5'	10'	
	Chrome plated		Plain		
1	37061	37062	37073	37074	HV Core barrel assembly - NWJ
2	37066	37066	37066	37066	Head
3	37078	37078	37078	37078	Bearing assembly
4	37017	37017	37017	37017	Lock nut
5	37018	37018	37018	37018	Spindle assembly
6	37019	37019	37019	37019	Shut-off valve (2 req'd.)
7	37020	37020	37020	37020	Valve adjusting washer (2 req'd.)
8	37021	37021	37021	37021	Ball thrust bearing
9	37022	37022	37022	37022	Spindle bearing
10	36018	36018	36018	36018	Hanger bearing
11	37024	37024	37024	37024	Compression spring
12	37025	37025	37025	37025	Self lock nut
13	37026	37026	37026	37026	Inner tube cap assembly
14	36024	36024	36024	36024	Grease fitting
15	36025	36025	36025	36025	Steel ball
16	36026	36026	36026	36026	Check valve body
17	37031	37032	37045	37046	Inner tube
18	37033	37033	37033	37033	Stop ring
19	37034	37034	37034	37034	Core lifter (Standard)
19	37035	37035	37035	37035	Core lifter (Broached)
20	37036	37036	37036	37036	Core lifter case
21	37041	37042	37067	37068	Outer tube
22	37043	37043	37043	37043	IT stabilizer
23	37044	37044	37044	37044	Thread protector
<p><b>NOTE:</b> All barrels have NWJ box connection. Sub required for other rod sizes.            If chrome plated, approximately 12" on either end of the outer tube &amp; full length of the inner tube I.D.            HV Core barrel assembly does not include reamer shell or bit. (See Diamond Bit section)</p>					



## CONVENTIONAL CORE BARRELS

### HV 3 Core Barrel





## CONVENTIONAL CORE BARRELS

### HV 3 Core Barrel

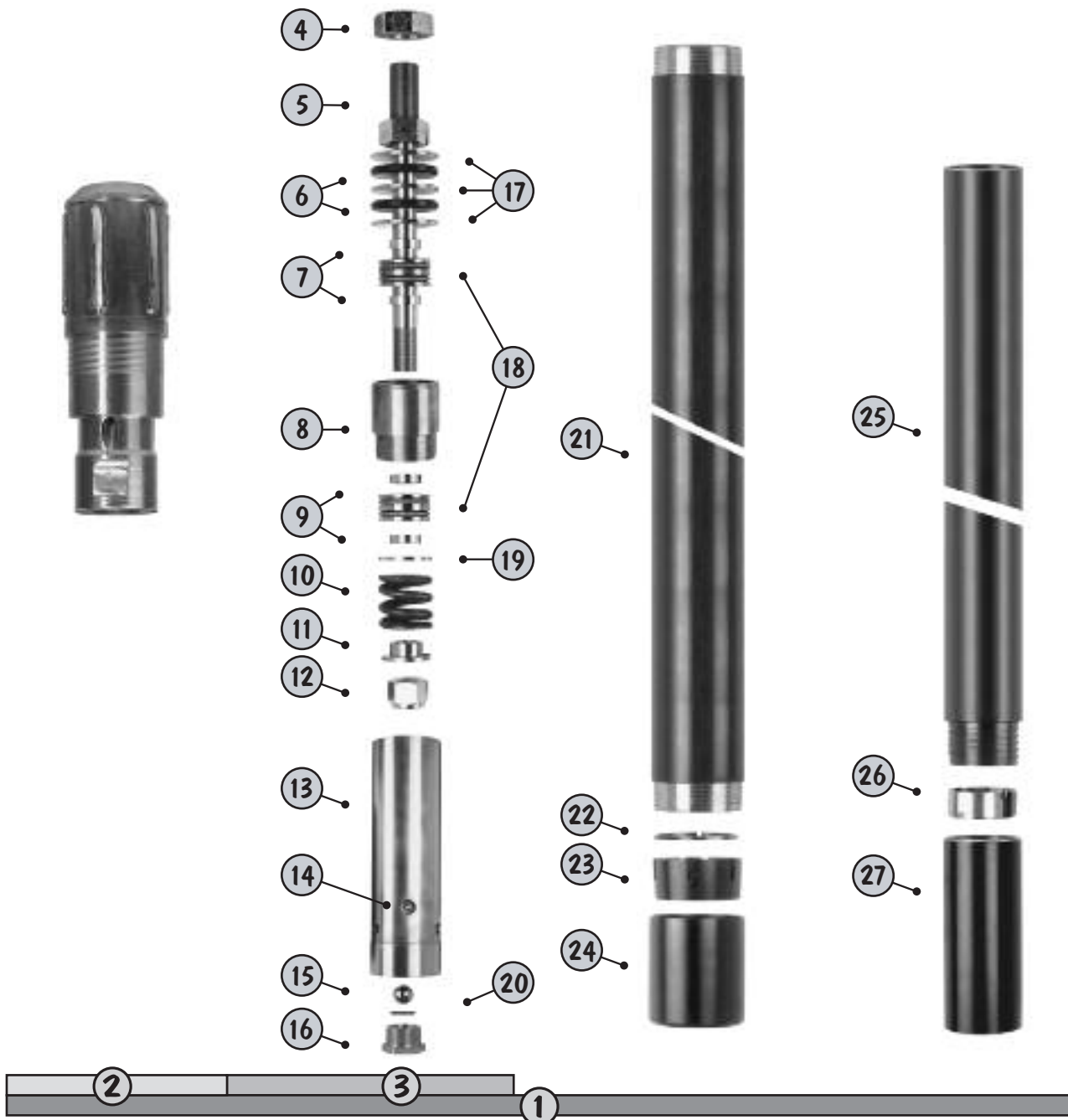
Ref. No.	Part No.		Description	Ref. No.	Part No.		Description
	5'	10'			5'	10'	
1	37063	37064	HV 3 Core barrel assembly - NWJ	21	37047	37048	Split tube liner
2	37066	37066	Head	22	37045	37046	Inner tube
3	37078	37078	Bearing assembly	23	37049	37049	Stop ring
4	37017	37017	Lock nut	24	37050	37050	Core lifter (Standard)
5	37018	37018	Spindle assembly	24	37051	37051	Core lifter (Broached)
6	37019	37019	Shut-off valve (2 req'd.)	25	37052	37052	Core lifter case
7	37020	37020	Valve adjusting washer (2 req'd.)	26	37067	37068	Outer tube
8	37021	37021	Ball thrust bearing	27	37043	37043	IT stabilizer
9	37022	37022	Spindle bearing	28	37044	37044	Thread protector
10	37023	37023	Hanger bearing				
11	37024	37024	Compression spring				
12	37025	37025	Self lock nut				
13	37026	37026	Inner tube cap assembly				
14	36024	36024	Grease fitting				
15	36025	36025	Steel ball				
16	36026	36026	Check valve body				
17	37055	37055	Adapter				
18	36123	36123	Piston plug				
19	37054	37054	"O" ring				
20	37053	37053	Piston				

**NOTE:** All barrels have NWJ box connection. Sub required for other rod sizes.  
 HV 3 Core barrel assembly does not include reamer shell or bit. (See *Diamond Bit section*)



## CONVENTIONAL CORE BARRELS

### PV Core Barrel





## CONVENTIONAL CORE BARRELS

### PV Core Barrel

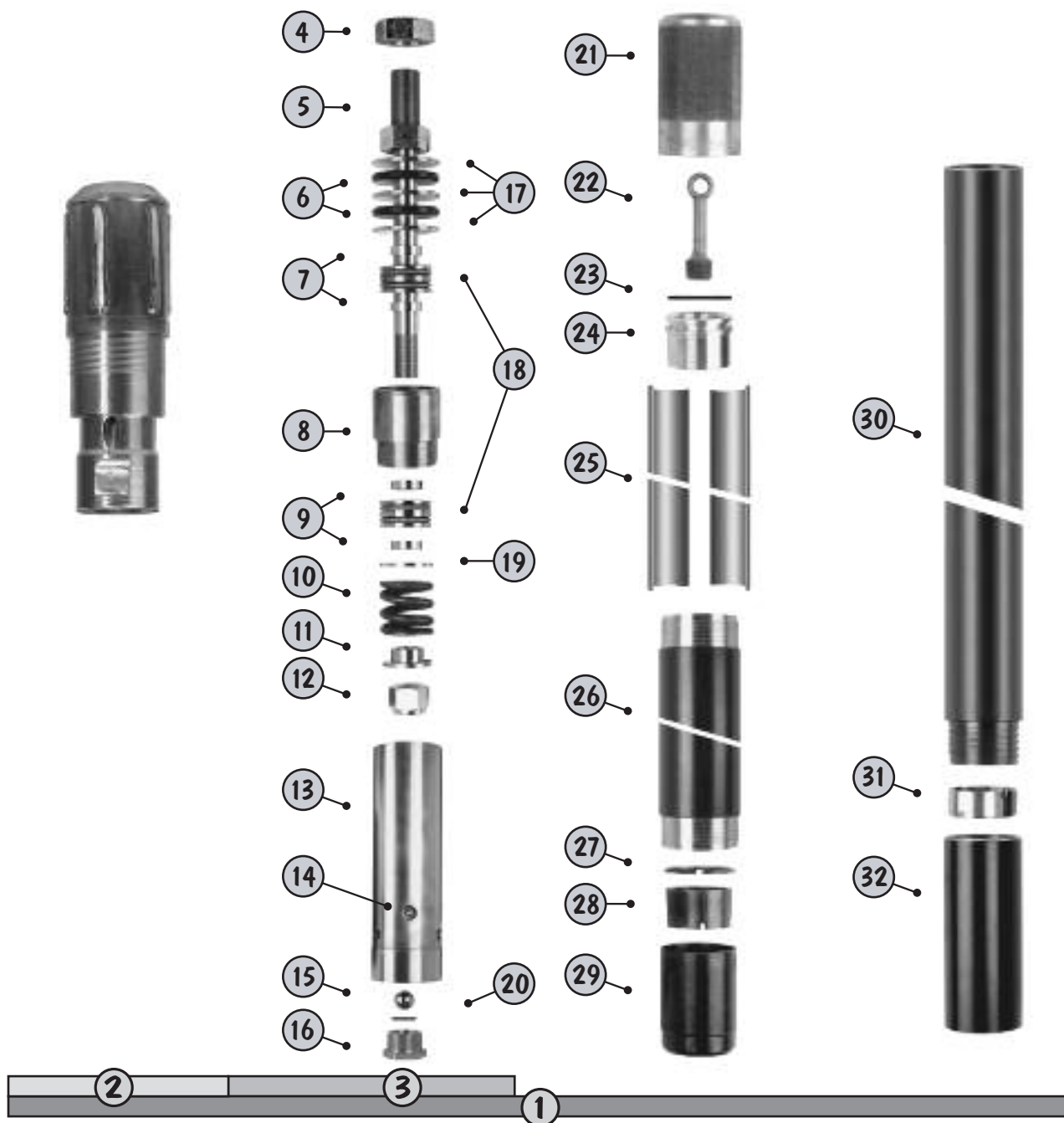
Ref. No.	Part No.		Description	Ref. No.	Part No.		Description
	5'	10'			5'	10'	
1	36139	36140	PV Core barrel assembly	20	36174	36174	"O" ring
2	36144	36144	Head (2.375 API reg)	21	36183	36184	Inner tube
3	37079	37079	Bearing assembly	22	36185	36185	Stop ring
4	36161	36161	Lock nut	23	36186	36186	Core lifter (Standard)
5	36162	36162	Spindle assembly	23	36187	36187	Core lifter (Broached)
6	36163	36163	Shut-off valve (2 req'd.)	24	36188	36188	Core lifter case
7	36165	36165	Thrust bearing spacer (2 req'd.)	25	36221	36223	Outer tube
8	36167	36167	Spindle bearing w/cage	26	36224	36224	IT stabilizer
9	36165	36165	Thrust bearing spacer (2 req'd.)	27	36225	36225	Thread protector
10	36168	36168	Compression spring				
11	36170	36170	Spring retaining washer				
12	36171	36171	Self lock nut				
13	36172	36172	Inner tube cap assembly				
14	36024	36024	Grease fitting				
15	36173	36173	Steel ball				
16	36175	36175	Check valve body				
17	36164	36164	Valve adjusting washer (3 req'd.)				
18	36166	36166	Ball thrust bearing (2 req'd.)				
19	36169	36169	Thrust bearing spacer				

**NOTE:** All barrels have 2.375 API reg box connection. Sub required for other rod sizes.  
 PV Core barrel assembly does not include reamer shell or bit. (See *Diamond Bit* section)



## CONVENTIONAL CORE BARRELS

### PV 3 Core Barrel





## CONVENTIONAL CORE BARRELS

### PV 3 Core Barrel

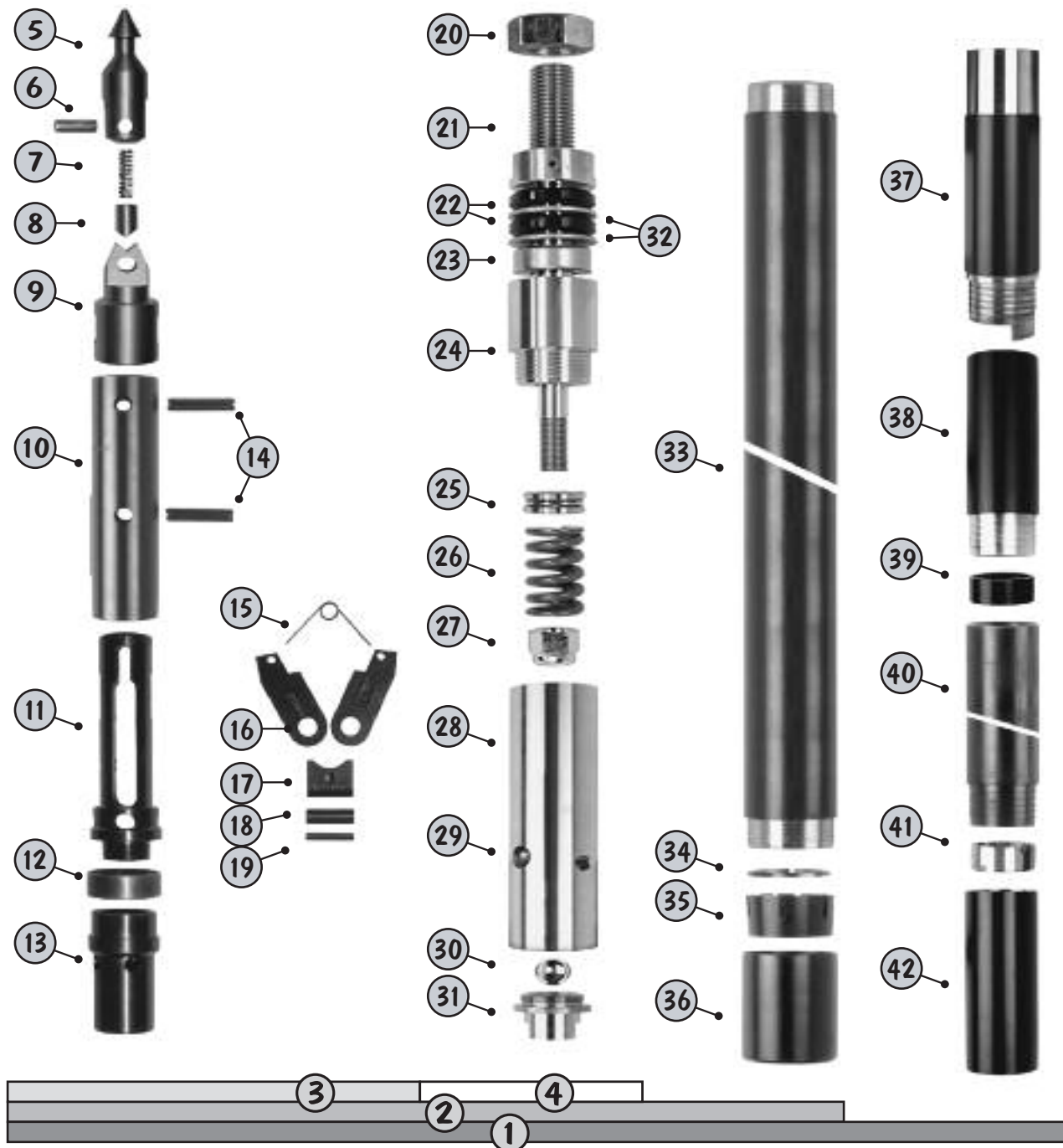
Ref. No.	Part No.		Description	Ref. No.	Part No.		Description
	5'	10'			5'	10'	
1	36141	36142	PV 3 Core barrel assembly	20	36174	36174	"O" ring
2	36144	36144	Head (2.375 API reg)	21	36197	36197	Adapter
3	37079	37079	Bearing assembly	22	36198	36198	Piston plug
4	36161	36161	Lock nut	23	36196	36196	"O" ring
5	36162	36162	Spindle assembly	24	36195	36195	Piston
6	36163	36163	Shut-off valve (2 req'd.)	25	36193	36194	Split tube liner
7	36165	36165	Thrust bearing spacer (2 req'd.)	26	36183	36184	Inner tube
8	36167	36167	Spindle bearing w/cage	27	36189	36189	Stop ring
9	36165	36165	Thrust bearing spacer (2 req'd.)	28	36190	36190	Core lifter (Standard)
10	36168	36168	Compression spring	28	36191	36191	Core lifter (Broached)
11	36170	36170	Spring retaining washer	29	36188	36188	Core lifter case
12	36171	36171	Self lock nut	30	36221	36222	Outer tube
13	36172	36172	Inner tube cap assembly	31	36224	36224	IT stabilizer
14	36024	36024	Grease fitting	32	36225	36225	Thread protector
15	36173	36173	Steel ball				
16	36175	36175	Check valve body				
17	36164	36164	Valve adjusting washer (3 req'd.)				
18	36166	36166	Ball thrust bearing (2 req'd.)				
19	36169	36169	Thrust bearing spacer				

**NOTE:** All barrels have 2.375 API reg box connection. Sub required for other rod sizes.  
 PV 3 Core barrel assembly does not include reamer shell or bit. (See *Diamond Bit section*)



## WIRELINE CORE BARRELS

### N W/L Core Barrel (Chrome Plated)





## WIRELINE CORE BARRELS

### N W/L Core Barrel (Chrome Plated)

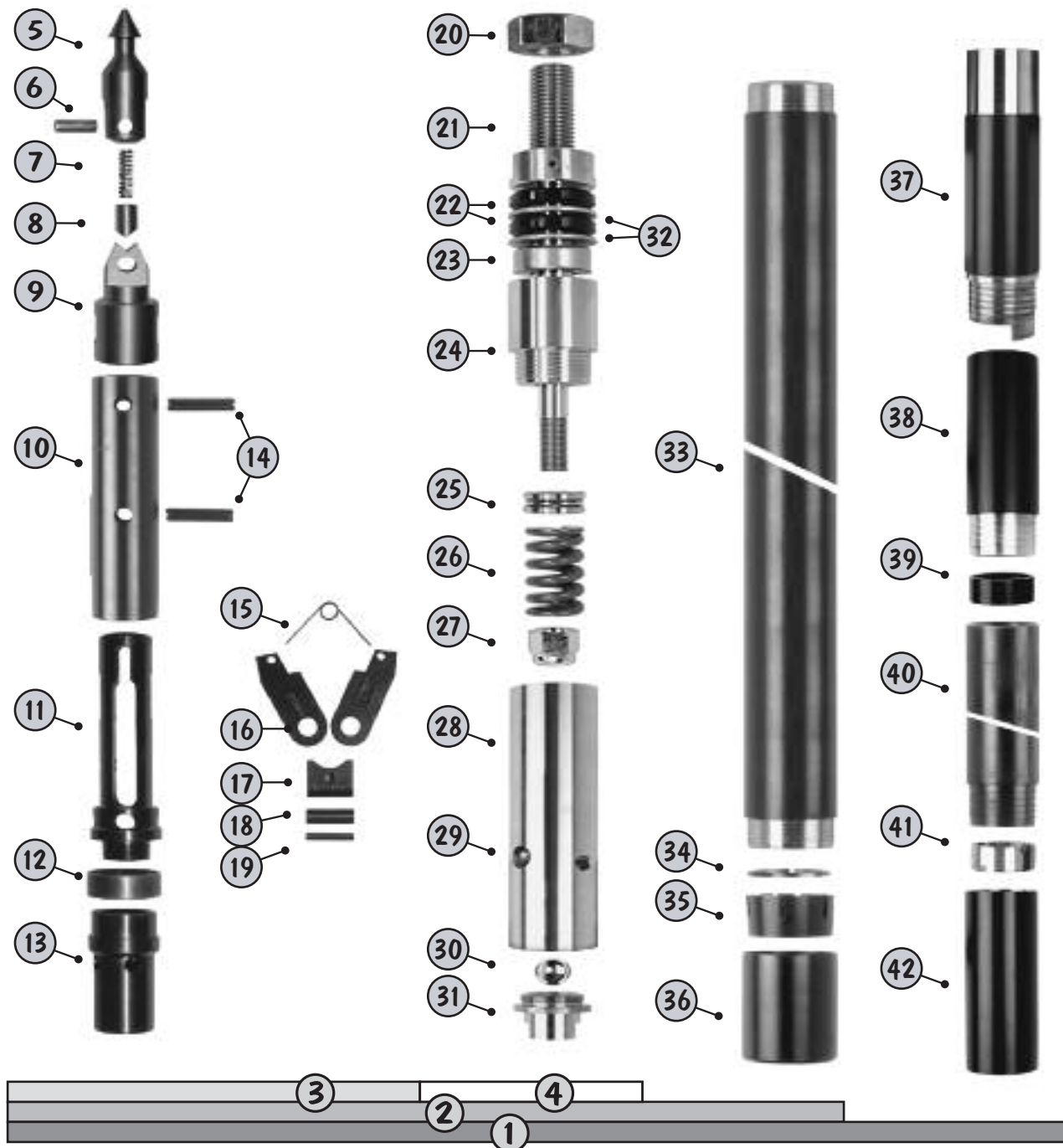
Ref. No.	Part No.		Description	Ref. No.	Part No.		Description
	5'	10'			5'	10'	
1	36001	36002	N W/L Core barrel assembly	24	36019	36019	Spindle bearing
2	36003	36004	Inner tube assembly	25	36020	36020	Hanger bearing
3	36005	36005	Head assembly	26	36021	36021	Compression spring
4	37076	37076	Bearing assembly	27	36022	36022	Self lock nut
5	36027	36027	Spearhead point	28	36023	36023	Inner tube cap assembly
6	36028	36028	Spiral pin (.4375" x 1")	29	36024	36024	Grease fitting
7	36029	36029	Compression spring	30	36025	36025	Steel ball
8	36030	36030	Detent plunger	31	36026	36026	Check valve body
9	36031	36031	Spearhead base	32	36017	36017	Valve adjusting washer (2 req'd.)
10	36033	36033	Latch retracting case	33	36034	36035	Inner tube
11	36011	36011	Upper latch body	34	36036	36036	Stop ring
12	36012	36012	Landing shoulder	35	36037	36037	Core lifter (Standard)
13	36013	36013	Lower latch body	35	36038	36038	Core lifter (Broached)
14	36032	36032	Spring pin (2 req'd.)	36	36039	36039	Core lifter case
15	36006	36006	Latch spring	37	36040	36040	Locking coupling (Standard)
16	36007	36007	Latch (2 req'd.)	37	36041	36041	Locking coupling (Carbide)
17	36008	36008	Latch support	38	36042	36042	Adapter coupling
18	36009	36009	Spring pin (.5" x 2")	39	36043	36043	Landing ring
19	36010	36010	Spring pin (.375" x 2")	40	36044	36045	Outer tube
20	36014	36014	Lock nut	41	36046	36046	IT stabilizer
21	36015	36015	Spindle assembly	42	36047	36047	Thread protector
22	36016	36016	Shut-off valve (2 req'd.)		36260	36260	Inner tube coupling
23	36018	36018	Ball thrust bearing				

**NOTE:** All barrels have N W/L rod box connection.  
 Chrome plated, approximately 12" on either end of the outer tube & full length of the inner tube I.D.  
 N W/L Core barrel assembly does not include reamer shell or bit. (See *Diamond Bit section*)



## WIRELINE CORE BARRELS

### N W/L Core Barrel (Plain)





## WIRELINE CORE BARRELS

### N W/L Core Barrel (Plain)

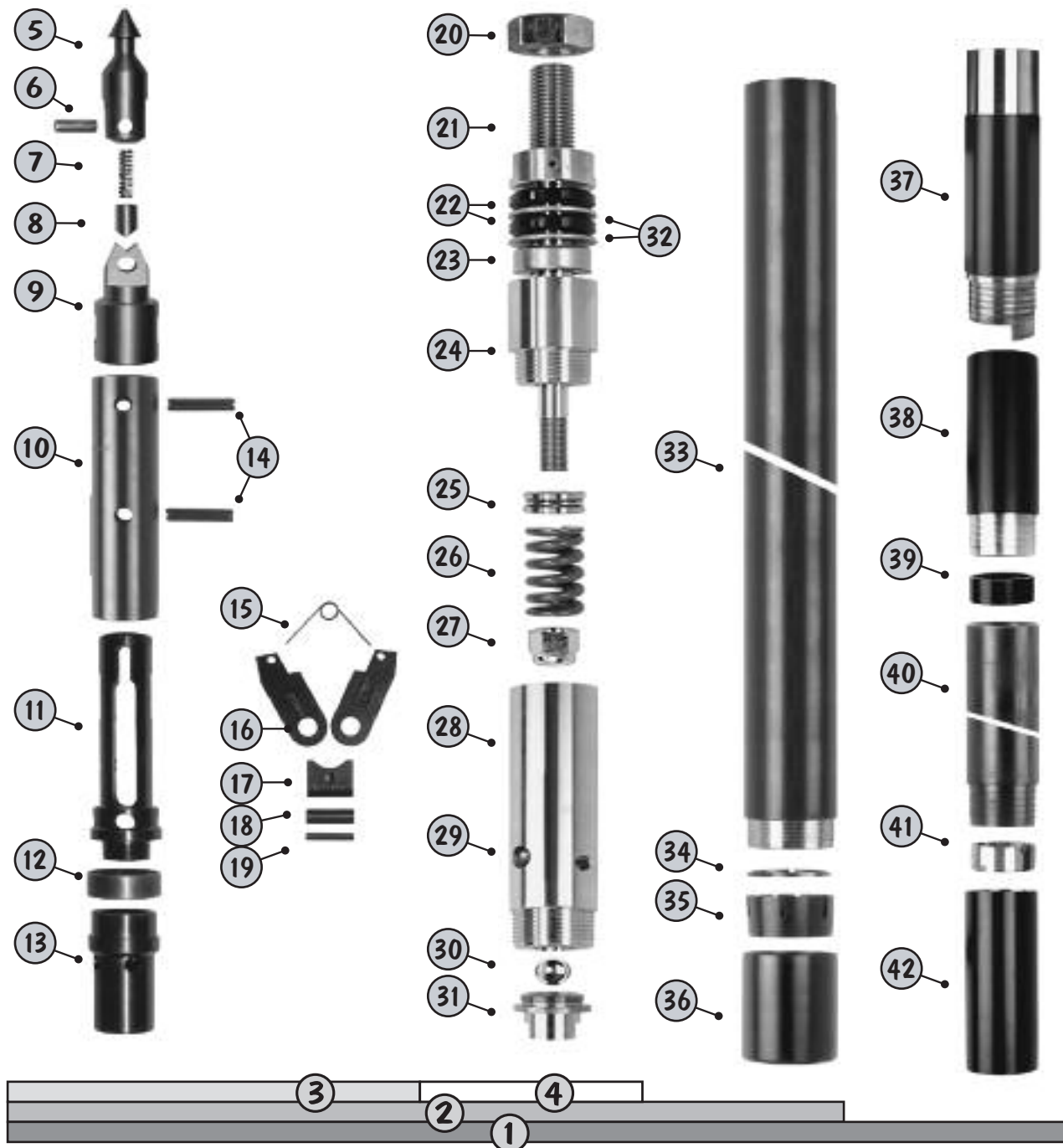
Ref. No.	Part No.		Description	Ref. No.	Part No.		Description
	5'	10'			5'	10'	
1	36131	36132	N W/L Core barrel assembly	24	36019	36019	Spindle bearing
2	36133	36134	Inner tube assembly	25	36020	36020	Hanger bearing
3	36005	36005	Head assembly	26	36021	36021	Compression spring
4	37076	37076	Bearing assembly	27	36022	36022	Self lock nut
5	36027	36027	Spearhead point	28	36023	36023	Inner tube cap assembly
6	36028	36028	Spiral pin (.4375" x 1")	29	36024	36024	Grease fitting
7	36029	36029	Compression spring	30	36025	36025	Steel ball
8	36030	36030	Detent plunger	31	36026	36026	Check valve body
9	36031	36031	Spearhead base	32	36017	36017	Valve adjusting washer (2 req'd.)
10	36033	36033	Latch retracting case	33	36110	36111	Inner tube
11	36011	36011	Upper latch body	34	36036	36036	Stop ring
12	36012	36012	Landing shoulder	35	36037	36037	Core lifter (Standard)
13	36013	36013	Lower latch body	35	36038	36038	Core lifter (Broached)
14	36032	36032	Spring pin (2 req'd.)	36	36039	36039	Core lifter case
15	36006	36006	Latch spring	37	36040	36040	Locking coupling (Standard)
16	36007	36007	Latch (2 req'd.)	37	36041	36041	Locking coupling (Carbide)
17	36008	36008	Latch support	38	36042	36042	Adapter coupling
18	36009	36009	Spring pin (.5" x 2")	39	36043	36043	Landing ring
19	36010	36010	Spring pin (.375" x 2")	40	36129	36130	Outer tube
20	36014	36014	Lock nut	41	36046	36046	IT stabilizer
21	36015	36015	Spindle assembly	42	36047	36047	Thread protector
22	36016	36016	Shut-off valve (2 req'd.)		36260	36260	Inner tube coupling
23	36018	36018	Ball thrust bearing				

**NOTE:** All barrels have N W/L rod box connection.  
N W/L Core barrel assembly does not include reamer shell or bit. (See *Diamond Bit section*)



## WIRELINE CORE BARRELS

### N W/L 2 Core Barrel (Chrome Plated)





## WIRELINE CORE BARRELS

### N W/L 2 Core Barrel (Chrome Plated)

Ref. No.	Part No.		Description	Ref. No.	Part No.		Description
	5'	10'			5'	10'	
1	36067	36068	N W/L 2 Core barrel assembly	24	36019	36019	Spindle bearing
2	36069	36070	Inner tube assembly	25	36020	36020	Hanger bearing
3	36071	36071	Head assembly	26	36021	36021	Compression spring
4	37077	37077	Bearing assembly	27	36022	36022	Self lock nut
5	36027	36027	Spearhead point	28	36074	36074	Inner tube cap assembly
6	36028	36028	Spiral pin (.4375" x 1")	29	36024	36024	Grease fitting
7	36029	36029	Compression spring	30	36025	36025	Steel ball
8	36030	36030	Detent plunger	31	36026	36026	Check valve body
9	36031	36031	Spearhead base	32	36017	36017	Valve adjusting washer (2 req'd.)
10	36033	36033	Latch retracting case	33	36075	36076	Inner tube
11	36011	36011	Upper latch body	34	36077	36077	Stop ring
12	36072	36072	Landing shoulder	35	36078	36078	Core lifter (Standard)
13	36013	36013	Lower latch body	35	36090	36090	Core lifter (Broached)
14	36032	36032	Spring pin (2 req'd.)	36	36079	36079	Core lifter case
15	36006	36006	Latch spring	37	36040	36040	Locking coupling (Standard)
16	36007	36007	Latch (2 req'd.)	37	36041	36041	Locking coupling (Carbide)
17	36008	36008	Latch support	38	36042	36042	Adapter coupling
18	36009	36009	Spring pin (.5" x 2")	39	36080	36080	Landing ring
19	36010	36010	Spring pin (.375" x 2")	40	36044	36045	Outer tube
20	36014	36014	Lock nut	41	36081	36081	IT stabilizer
21	36015	36015	Spindle assembly	42	36047	36047	Thread protector
22	36016	36016	Shut-off valve (2 req'd.)		36124	36246	Inner tube extenders
23	36018	36018	Ball thrust bearing				

**NOTE:** All barrels have N W/L rod box connection.  
 Chrome plated, approximately 12" on either end of the outer tube & full length of the inner tube I.D.  
 N W/L 2 Core barrel assembly does not include reamer shell or bit. (See *Diamond Bit section*)





## WIRELINE CORE BARRELS

### N W/L 2 Core Barrel (Plain)

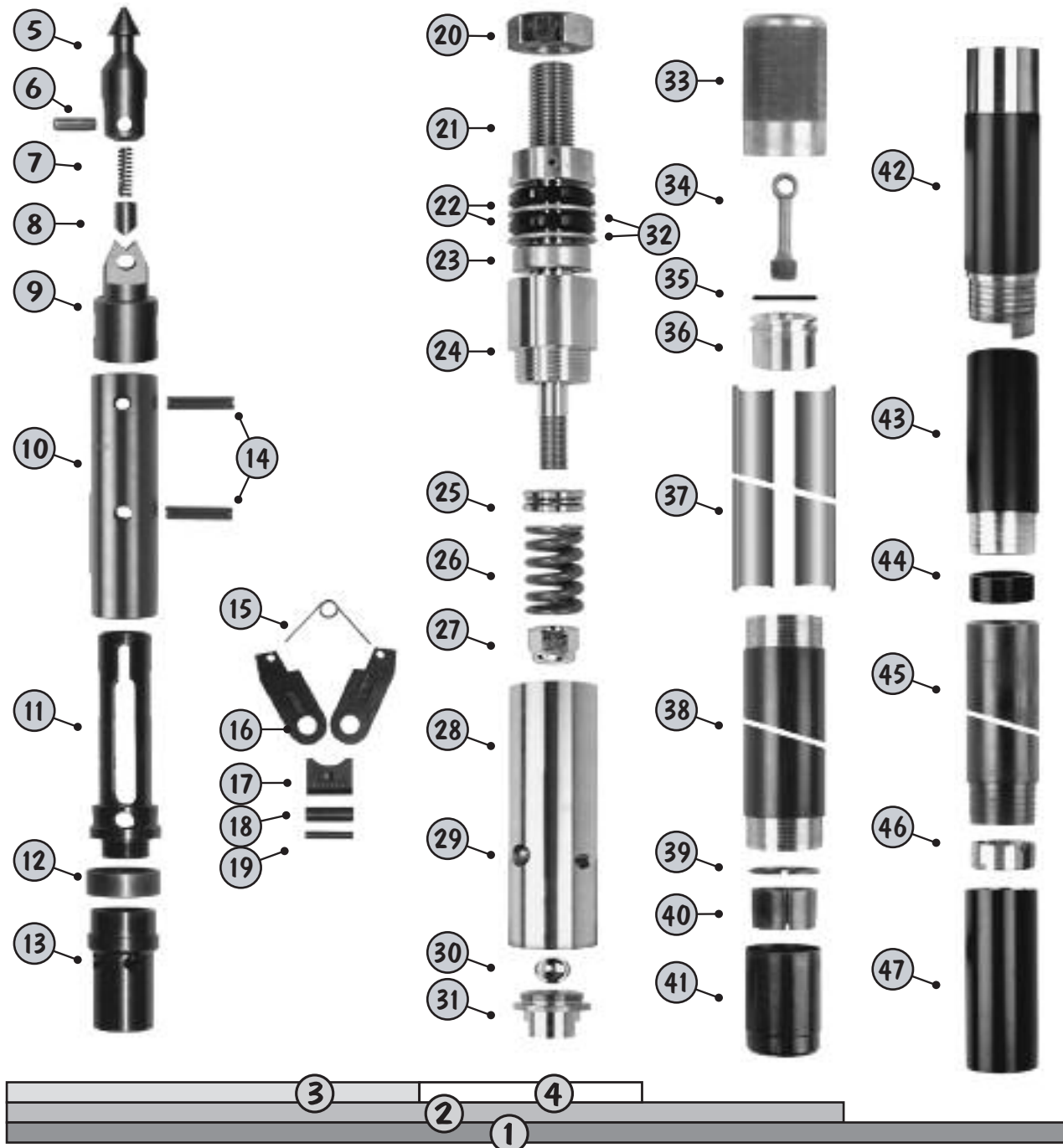
Ref. No.	Part No.		Description	Ref. No.	Part No.		Description
	5'	10'			5'	10'	
1	36135	36136	N W/L 2 Core barrel assembly	24	36019	36019	Spindle bearing
2	36137	36138	Inner tube assembly	25	36020	36020	Hanger bearing
3	36071	36071	Head assembly	26	36021	36021	Compression spring
4	37077	37077	Bearing assembly	27	36022	36022	Self lock nut
5	36027	36027	Spearhead point	28	36074	36074	Inner tube cap assembly
6	36028	36028	Spiral pin (.4375" x 1")	29	36024	36024	Grease fitting
7	36029	36029	Compression spring	30	36025	36025	Steel ball
8	36030	36030	Detent plunger	31	36026	36026	Check valve body
9	36031	36031	Spearhead base	32	36017	36017	Valve adjusting washer (2 req'd.)
10	36033	36033	Latch retracting case	33	36112	36113	Inner tube
11	36011	36011	Upper latch body	34	36077	36077	Stop ring
12	36072	36072	Landing shoulder	35	36078	36078	Core lifter (Standard)
13	36013	36013	Lower latch body	35	36090	36090	Core lifter (Broached)
14	36032	36032	Spring pin (2 req'd.)	36	36079	36079	Core lifter case
15	36006	36006	Latch spring	37	36040	36040	Locking coupling (Standard)
16	36007	36007	Latch (2 req'd.)	37	36041	36041	Locking coupling (Carbide)
17	36008	36008	Latch support	38	36042	36042	Adapter coupling
18	36009	36009	Spring pin (.5" x 2")	39	36080	36080	Landing ring
19	36010	36010	Spring pin (.375" x 2")	40	36129	36130	Outer tube
20	36014	36014	Lock nut	41	36081	36081	IT stabilizer
21	36015	36015	Spindle assembly	42	36047	36047	Thread protector
22	36016	36016	Shut-off valve (2 req'd.)				
23	36018	36018	Ball thrust bearing				

**NOTE:** All barrels have N W/L rod box connection.  
N W/L 2 Core barrel assembly does not include reamer shell or bit. (See Diamond Bit section)



## WIRELINE CORE BARRELS

### N W/L 3 Core Barrel





## WIRELINE CORE BARRELS

### N W/L 3 Core Barrel

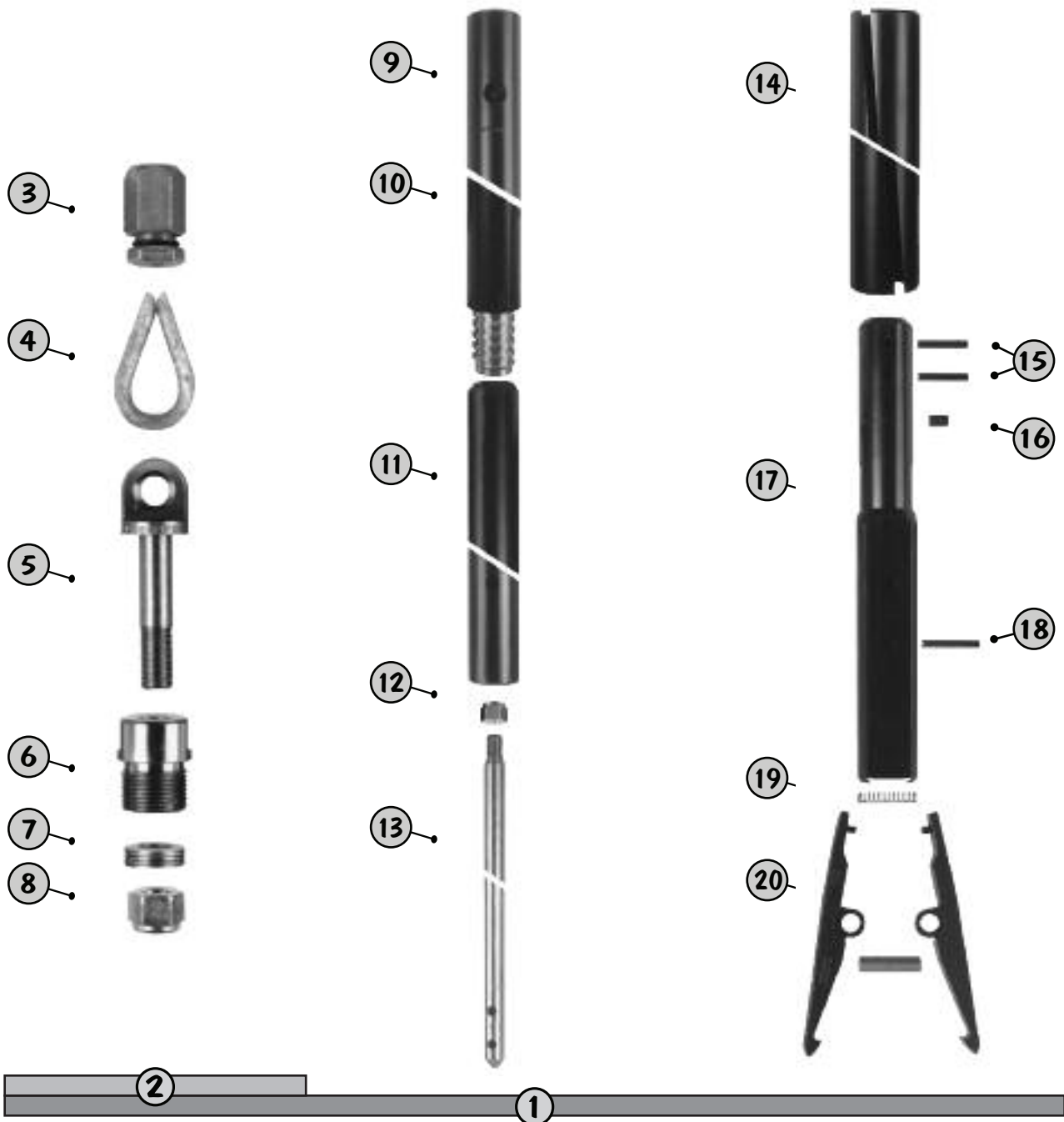
Ref. No.	Part No.		Description	Ref. No.	Part No.		Description
	5'	10'			5'	10'	
1	36106	36107	NW/L 3 Core barrel assembly	26	36021	36021	Compression spring
2	36108	36109	Inner tube assembly	27	36022	36022	Self lock nut
3	36005	36005	Head assembly	28	36023	36023	Inner tube cap assembly
4	37076	37076	Bearing assembly	29	36024	36024	Grease fitting
5	36027	36027	Spearhead point	30	36025	36025	Steel ball
6	36028	36028	Spiral pin (.4375" x 1")	31	36026	36026	Check valve body
7	36029	36029	Compression spring	32	36017	36017	Valve adjusting washer (2 req'd.)
8	36030	36030	Detent plunger	33	36122	36122	Adapter
9	36031	36031	Spearhead base	34	36123	36123	Piston plug
10	36033	36033	Latch retracting case	35	36121	36121	"O" ring
11	36011	36011	Upper latch body	36	36120	36120	Piston
12	36012	36012	Landing shoulder	37	36114	36115	Split tube liner
13	36013	36013	Lower latch body	38	36110	36111	Inner tube
14	36032	36032	Spring pin (2 req'd.)	39	36116	36116	Stop ring
15	36006	36006	Latch spring	40	36117	36117	Core lifter (Standard)
16	36007	36007	Latch (2 req'd.)	40	36118	36118	Core lifter (Broached)
17	36008	36008	Latch support	41	36119	36119	Core lifter case
18	36009	36009	Spring pin (.5" x 2")	42	36040	36040	Locking coupling (Standard)
19	36010	36010	Spring pin (.375" x 2")	42	36041	36041	Locking coupling (Carbide)
20	36014	36014	Lock nut	43	36042	36042	Adapter coupling
21	36015	36015	Spindle assembly	44	36043	36043	Landing ring
22	36016	36016	Shut-off valve (2 req'd.)	45	36129	36130	Outer tube
23	36018	36018	Ball thrust bearing	46	36046	36046	IT stabilizer
24	36019	36019	Spindle bearing	47	36047	36047	Thread protector
25	36020	36020	Hanger bearing				

**NOTE:** All barrels have N W/L rod box connection.  
 N W/L 3 Core barrel assembly does not include reamer shell or bit. (See *Diamond Bit* section)



## WIRELINE CORE BARRELS

### N W/L Overshot Assembly





## WIRELINE CORE BARRELS

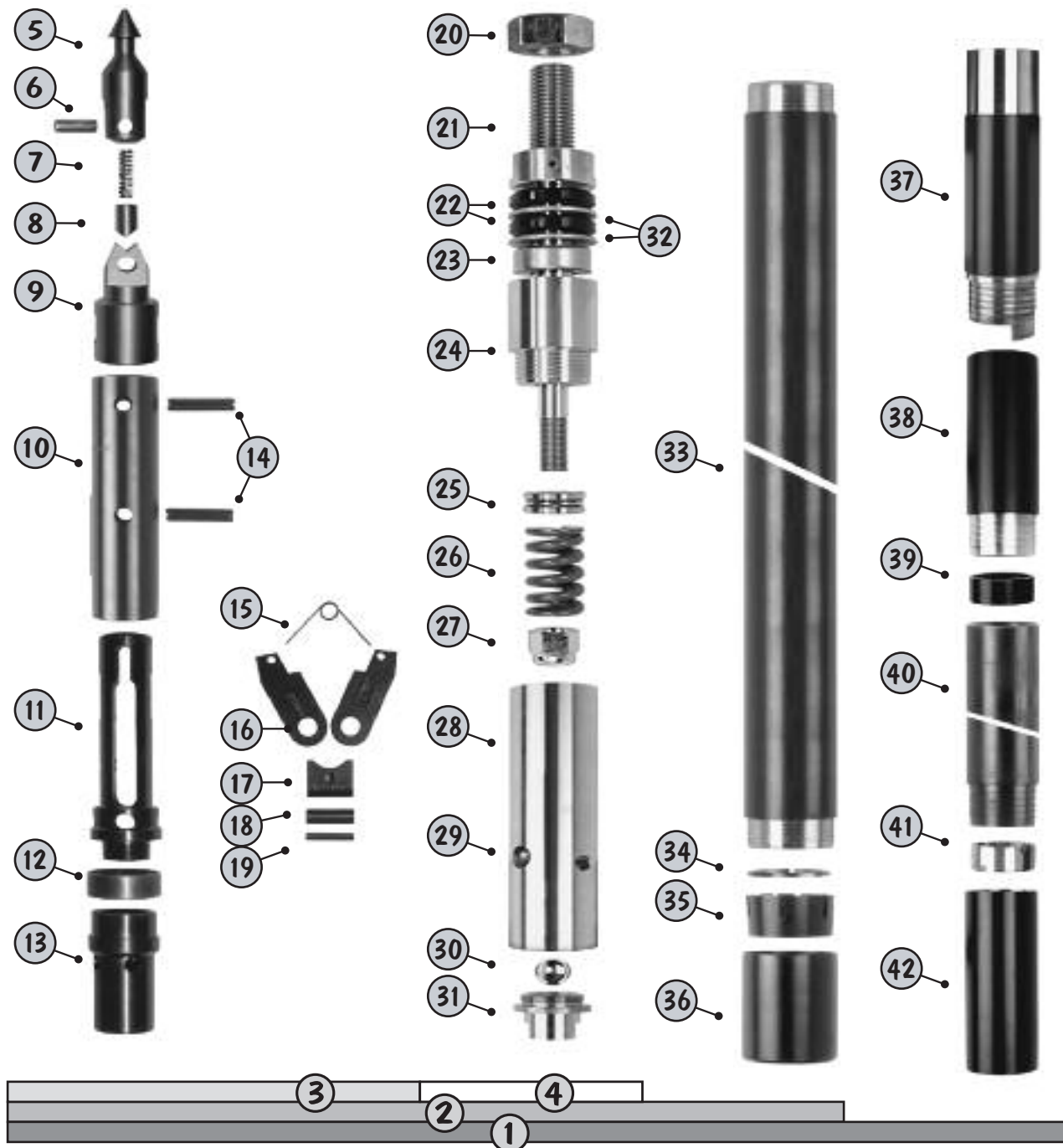
### N W/L Overshot Assembly

Ref. No.	Part No.	Description
1	36048	N W/L Overhsot Assembly Complete
2	36049	Cable Swivel Assembly
3	37075	Cable clamp - Overshot
4	36050	Wire rope thimble
5	36051	Eye bolt
6	36052	Cable swivel collar
7	36053	Needle thrust bearing
8	36054	Nut
9	36024	Grease fitting
10	36056	Cable swivel body
11	36057	Jar tube weldment
12	36058	Self lock nut
13	36059	Jar staff
14	36060	Locking sleeve
15	36091	Spiral Pin (2 req'd.) (.25" x 1.5")
16	36061	Set screw
17	36066	Overshot head
18	36065	Spring Pin (.25" x 1.75")
19	36062	Lifting dog spring
20	36063	Lifting dog (2 req'd.)
21	36064	Lifting dog pin (.5" x 1.9375")



## WIRELINE CORE BARRELS

### H W/L Core Barrel (Chrome Plated)





## WIRELINE CORE BARRELS

### H W/L Core Barrel (Chrome Plated)

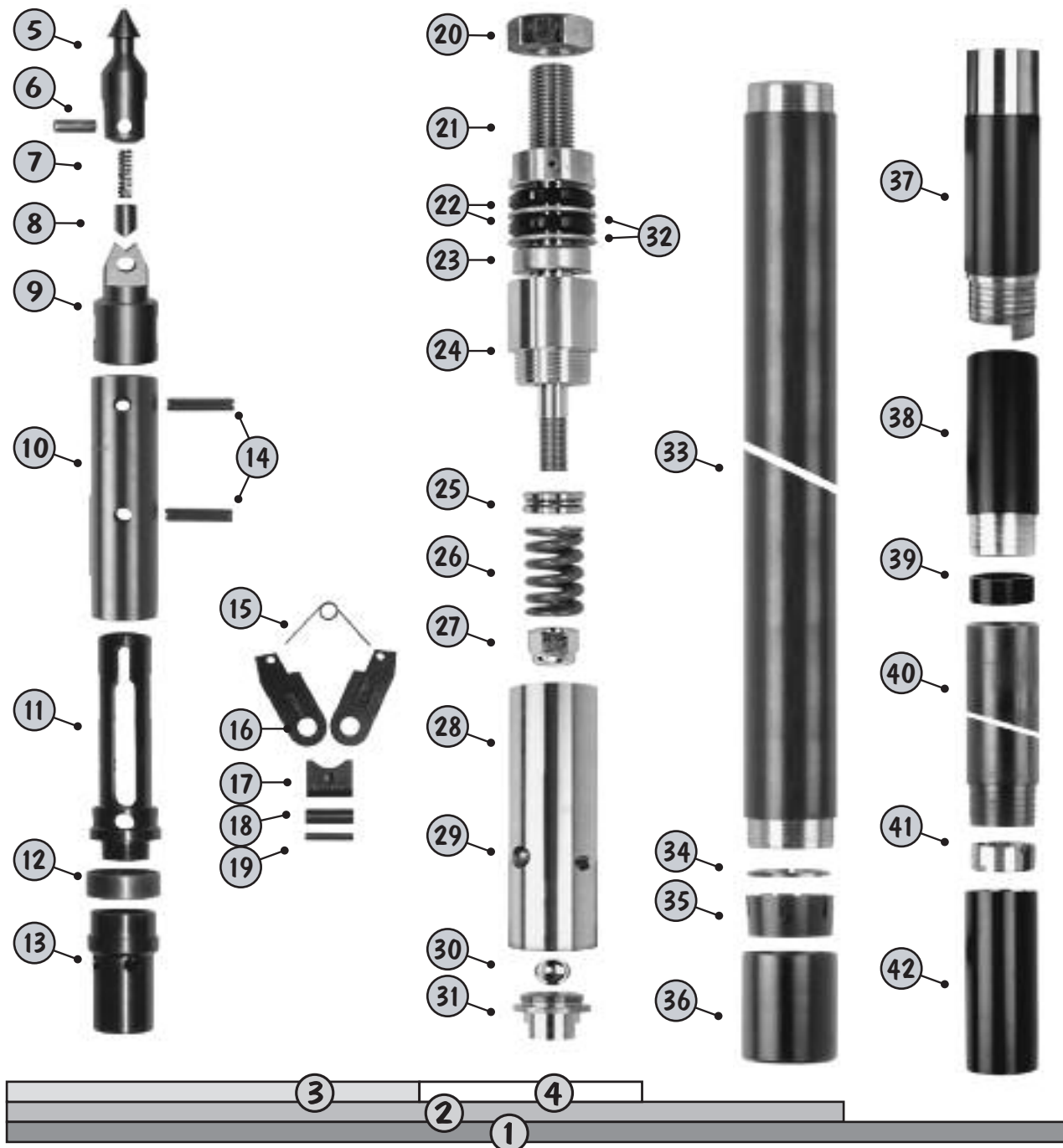
Ref. No.	Part No.		Description	Ref. No.	Part No.		Description
	5'	10'			5'	10'	
1	37000	37001	HW/L Core barrel assembly	23	37021	37021	Ball thrust bearing
2	37002	37003	Inner tube assembly	24	37022	37022	Spindle bearing
3	37008	37008	Head assembly	25	36018	36018	Hanger bearing
4	37078	37078	Bearing assembly	26	37024	37024	Compression spring
5	36027	36027	Spearhead point	27	37025	37025	Self lock nut
6	36028	36028	Spiral pin (.4375" x 1")	28	37026	37026	Inner tube cap assembly
7	36029	36029	Compression spring	29	36024	36024	Grease fitting
8	36030	36030	Detent plunger	30	36025	36025	Steel ball
9	37028	37028	Spearhead base	31	36026	36026	Check valve body
10	37030	37030	Latch retracting case	32	37020	37020	Valve adjusting washer (2 req'd.)
11	37014	37014	Upper latch body	33	37031	37032	Inner tube
12	37015	37015	Landing shoulder	34	37033	37033	Stop ring
13	37016	37016	Lower latch body	35	37034	37034	Core lifter (Standard)
14	37029	37029	Spring pin (2 req'd.)	35	37035	37035	Core lifter (Broached)
15	37009	37009	Latch spring	36	37036	37036	Core lifter case
16	37010	37010	Latch (2 req'd.)	37	37037	37037	Locking coupling (Standard)
17	37011	37011	Latch support	37	37038	37038	Locking coupling (Carbide)
18	37012	37012	Spring pin (.5" x 2")	38	37039	37039	Adapter coupling
19	37013	37013	Spring pin (.375" x 2")	39	37040	37040	Landing ring
20	37017	37017	Lock nut	40	37041	37042	Outer tube
21	37018	37018	Spindle assembly	41	37043	37043	IT stabilizer
22	37019	37019	Shut-off valve (2 req'd.)	42	37044	37044	Thread protector

**NOTE:** All barrels have H W/L rod box connection.  
 Chrome plated, approximately 12" on either end of the outer tube & full length of the inner tube I.D.  
 H W/L Core barrel assembly does not include reamer shell or bit. (See *Diamond Bit section*)



## WIRELINE CORE BARRELS

### H W/L Core Barrel (Plain)





## WIRELINE CORE BARRELS

### H W/L Core Barrel (Plain)

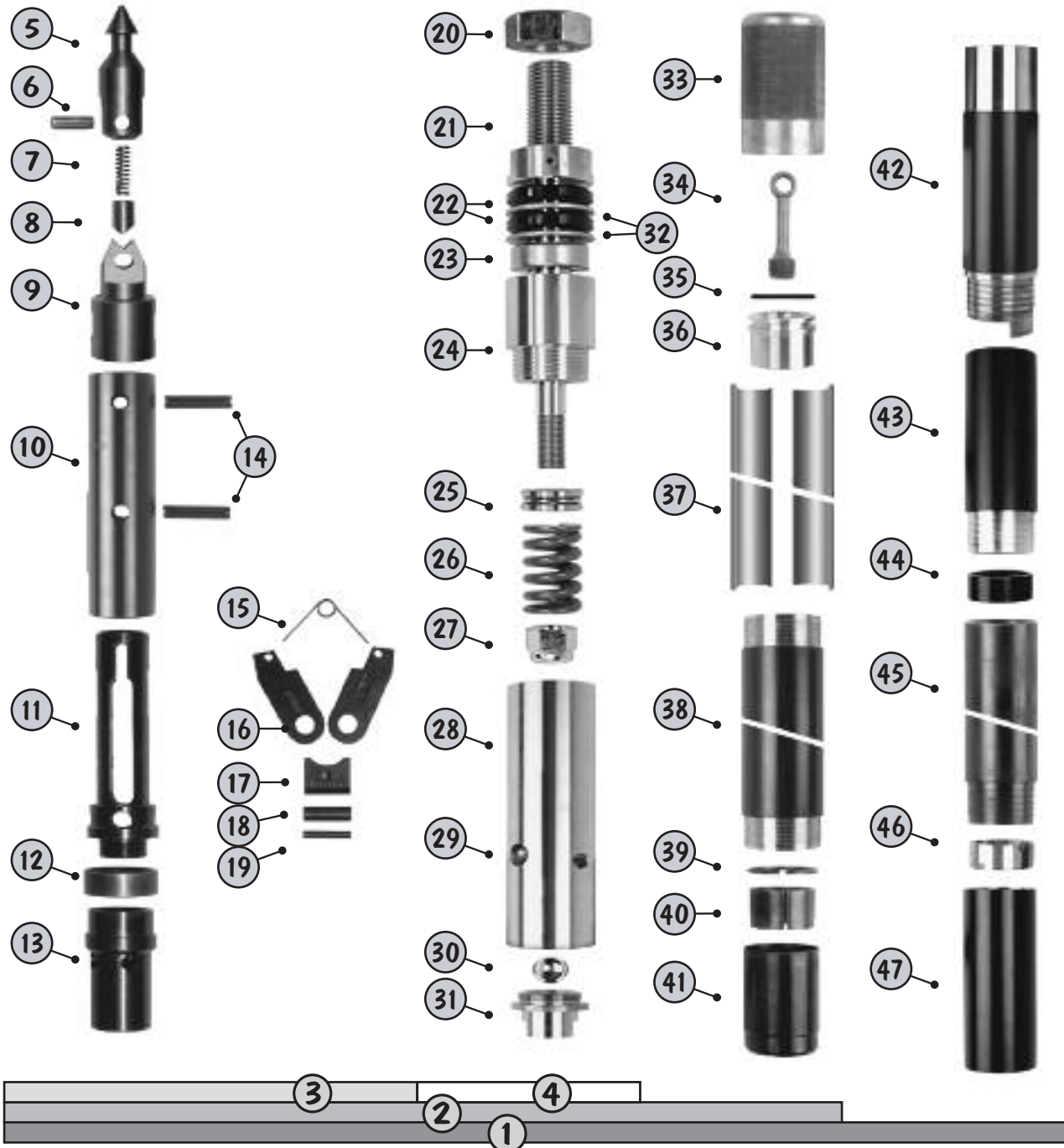
Ref. No.	Part No.		Description	Ref. No.	Part No.		Description
	5'	10'			5'	10'	
1	37069	37070	HW/L Core barrel assembly	23	37021	37021	Ball thrust bearing
2	37071	37072	Inner tube assembly	24	37022	37022	Spindle bearing
3	37008	37008	Head assembly	25	36018	36018	Hanger bearing
4	37078	37078	Bearing assembly	26	37024	37024	Compression spring
5	36027	36027	Spearhead point	27	37025	37025	Self lock nut
6	36028	36028	Spiral pin (.4375" x 1")	28	37026	37026	Inner tube cap assembly
7	36029	36029	Compression spring	29	36024	36024	Grease fitting
8	36030	36030	Detent plunger	30	36025	36025	Steel ball
9	37028	37028	Spearhead base	31	36026	36026	Check valve body
10	37030	37030	Latch retracting case	32	37020	37020	Valve adjusting washer (2 req'd.)
11	37014	37014	Upper latch body	33	37045	37046	Inner tube
12	37015	37015	Landing shoulder	34	37033	37033	Stop ring
13	37016	37016	Lower latch body	35	37034	37034	Core lifter (Standard)
14	37029	37029	Spring pin (2 req'd.)	35	37035	37035	Core lifter (Broached)
15	37009	37009	Latch spring	36	37036	37036	Core lifter case
16	37010	37010	Latch (2 req'd.)	37	37037	37037	Locking coupling (Standard)
17	37011	37011	Latch support	37	37038	37038	Locking coupling (Carbide)
18	37012	37012	Spring pin (.5" x 2")	38	37039	37039	Adapter coupling
19	37013	37013	Spring pin (.375" x 2")	39	37040	37040	Landing ring
20	37017	37017	Lock nut	40	37067	37068	Outer tube
21	37018	37018	Spindle assembly	41	37043	37043	IT stabilizer
22	37019	37019	Shut-off valve (2 req'd.)	42	37044	37044	Thread protector

**NOTE:** All barrels have H W/L rod box connection.  
H W/L Core barrel assembly does not include reamer shell or bit. (See *Diamond Bit section*)



## WIRELINE CORE BARRELS

### H W/L 3 Core Barrel





## WIRELINER CORE BARRELS

### H W/L 3 Core Barrel

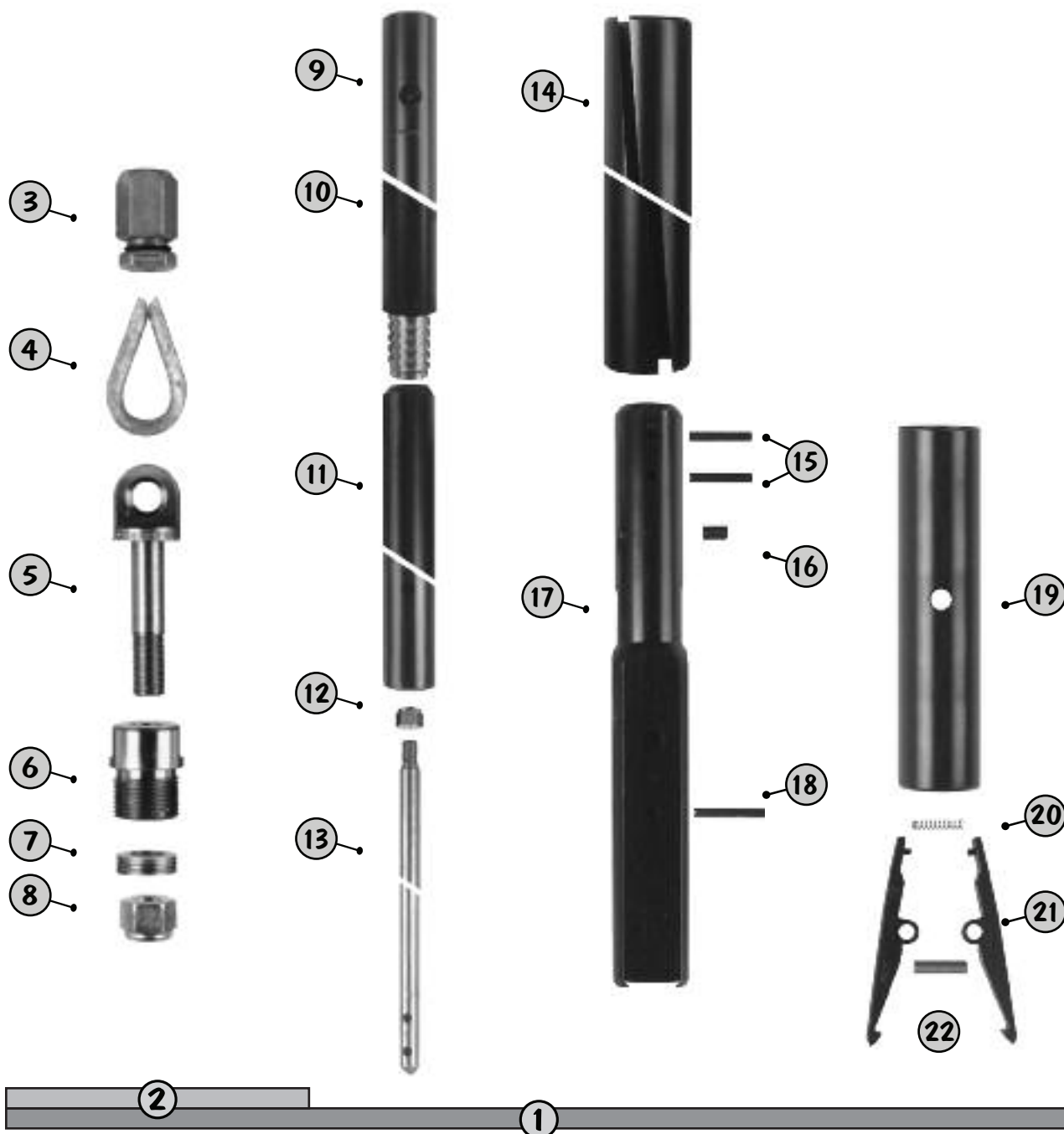
Ref. No.	Part No.		Description	Ref. No.	Part No.		Description
	5'	10'			5'	10'	
1	37004	37005	HW/L 3 Core barrel assembly	26	37024	37024	Compression spring
2	37006	37007	Inner tube assembly	27	37025	37025	Self lock nut
3	37008	37008	Head assembly	28	37026	37026	Inner tube cap assembly
4	37078	37078	Bearing assembly	29	36024	36024	Grease fitting
5	36027	36027	Spearhead point	30	36025	36025	Steel ball
6	36028	36028	Spiral pin (.4375" x 1")	31	36026	36026	Check valve body
7	36029	36029	Compression spring	32	37020	37020	Valve adjusting washer (2 req'd.)
8	36030	36030	Detent plunger	33	37055	37055	Adapter
9	37028	37028	Spearhead base	34	36123	36123	Piston plug
10	37030	37030	Latch retracting case	35	37054	37054	"O" ring
11	37014	37014	Upper latch body	36	37053	37053	Piston
12	37015	37015	Landing shoulder	37	37047	37048	Split tube liner
13	37016	37016	Lower latch body	38	37045	37046	Inner tube
14	37029	37029	Spring pin (2 req'd.)	39	37049	37049	Stop ring
15	37009	37009	Latch spring	40	37050	37050	Core lifter (Standard)
16	37010	37010	Latch (2 req'd.)	40	37051	37051	Core lifter (Broached)
17	37011	37011	Latch support	41	37052	37052	Core lifter case
18	37012	37012	Spring pin (.5" x 2")	42	37037	37037	Locking coupling (Standard)
19	37013	37013	Spring pin (.375" x 2")	42	37038	37038	Locking coupling (Carbide)
20	37017	37017	Lock nut	43	37039	37039	Adapter coupling
21	37018	37018	Spindle assembly	44	37040	37040	Landing ring
22	37019	37019	Shut-off valve (2 req'd.)	45	37067	37068	Outer tube
23	37021	37021	Ball thrust bearing	46	37043	37043	IT stabilizer
24	37022	37022	Spindle bearing	47	37044	37044	Thread protector
25	36018	36018	Hanger bearing				

**NOTE:** All barrels have H W/L rod box connection.  
H W/L 3 Core barrel assembly does not include reamer shell or bit. (See Diamond Bit section)



## WIRELINE CORE BARRELS

### H W/L Overshot Assembly





## WIRELINE CORE BARRELS

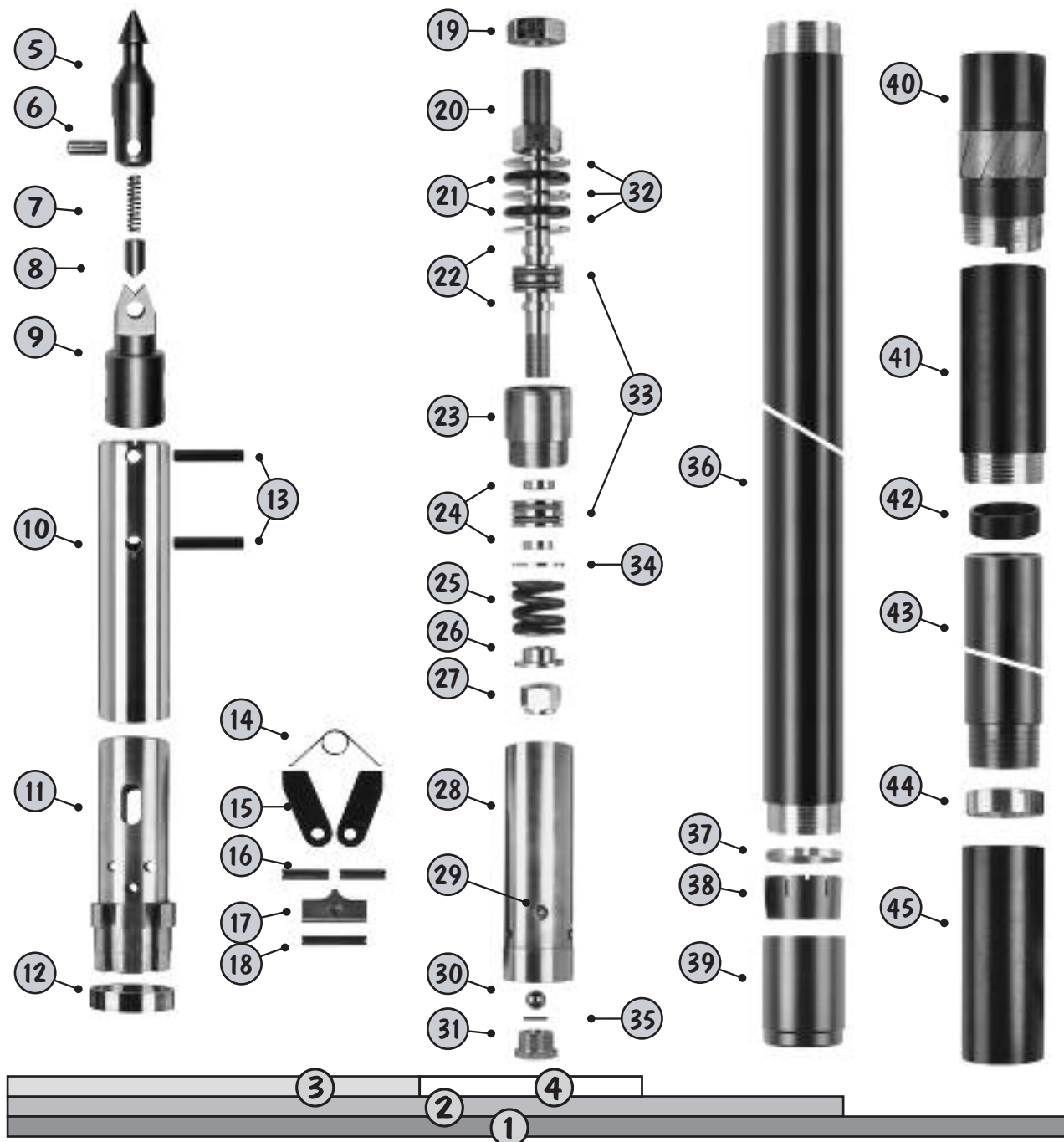
### H W/L Overshot Assembly

Ref. No.	Part No.	Description
1	37057	H W/L Overshot Assembly Complete
2	36049	Cable Swivel Assembly
3	37075	Cable clamp - Overshot
4	36050	Wire rope thimble (.1875")
5	36051	Eye bolt
6	36052	Cable swivel collar
7	36053	Needle thrust bearing
8	36054	Nut
9	36024	Grease fitting
10	36056	Cable swivel body
11	36057	Jar tube weldment
12	36058	Self lock nut
13	36059	Jar staff
14	36060	Locking sleeve
15	36091	Spiral Pin (2 req'd.) (.25" x 1.5")
16	36061	Set screw
17	37059	Overshot head
18	37029	Spring Pin (.5" x 2.5625")
19	37060	Adapter sleeve
20	36062	Lifting dog spring
21	36063	Lifting dog (2 req'd.)
22	37058	Lifting dog pin (.5" x 1.9375")



## WIRELINE CORE BARRELS

### P W/L Core Barrel





## WIRELINE CORE BARRELS

### P W/L Core Barrel

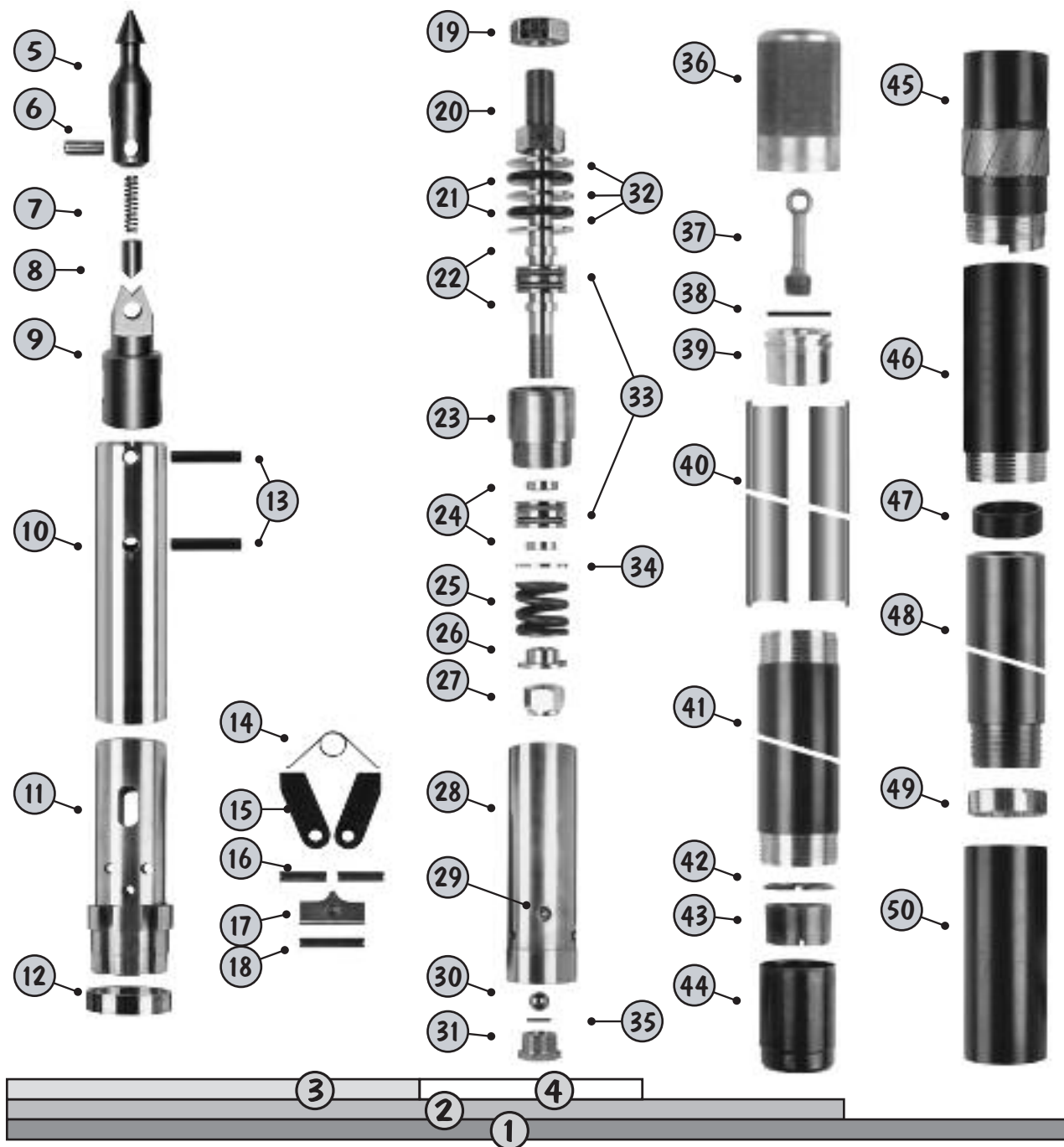
Ref. No.	Part No.		Description	Ref. No.	Part No.		Description
	5'	10'			5'	10'	
1	36145	36146	PW/L Core barrel assembly	24	36165	36165	Thrust bearing spacer (2 req'd.)
2	36147	36148	Inner tube assembly	25	36168	36168	Compression spring
3	36153	36153	Head assembly	26	36170	36170	Spring retaining washer
4	37079	37079	Bearing assembly	27	36171	36171	Self lock nut
5	36182	36182	Spearhead point	28	36172	36172	Inner tube cap assembly
6	36181	36181	Pivot pin (.75" x 2.25")	29	36024	36024	Grease fitting
7	36180	36180	Compression spring	30	36173	36173	Steel ball
8	36179	36179	Detent plunger	31	36175	36175	Check valve body
9	36178	36178	Spearhead base	32	36164	36164	Valve adjusting washer (3 req'd.)
10	36176	36176	Latch retracting case	33	36166	36166	Ball thrust bearing (2 req'd.)
11	36159	36159	Latch body w/landing shoulder	34	36169	36169	Thrust bearing spacer (1 req'd.)
12	36160	36160	Landing shoulder	35	36174	36174	"O" ring
13	36177	36177	Spiral pin (2 req'd.) (.75" x 3.75")	36	36183	36184	Inner tube
14	36154	36154	Latch spring	37	36185	36185	Stop ring
15	36155	36155	Latch (2 req'd.)	38	36186	36186	Core lifter (Standard)
16	37012	37012	Spring pin (2 req'd.) (.5" x 2")	38	36187	36187	Core lifter (Broached)
17	36156	36156	Latch support	39	36188	36188	Core lifter case
18	36158	36158	Spring pin (.5" x 2.75")	40	36199	36199	Locking coupling (HWT)
19	36161	36161	Lock nut	41	36219	36219	Adapter coupling
20	36162	36162	Spindle assembly	42	36220	36220	Landing ring
21	36163	36163	Shut-off valve (2 req'd)	43	36221	36223	Outer tube
22	36165	36165	Thrust bearing spacer (2 req'd.)	44	36224	36224	IT stabilizer
23	36167	36167	Spindle bearing w/cage	45	36225	36225	Thread protector

**NOTE:** All barrels have HWT rod box connection.  
P W/L Core barrel assembly does not include reamer shell or bit. (See *Diamond Bit section*)



## WIRELINE CORE BARRELS

### P W/L 3 Core Barrel





## WIRELINE CORE BARRELS

### P W/L 3 Core Barrel

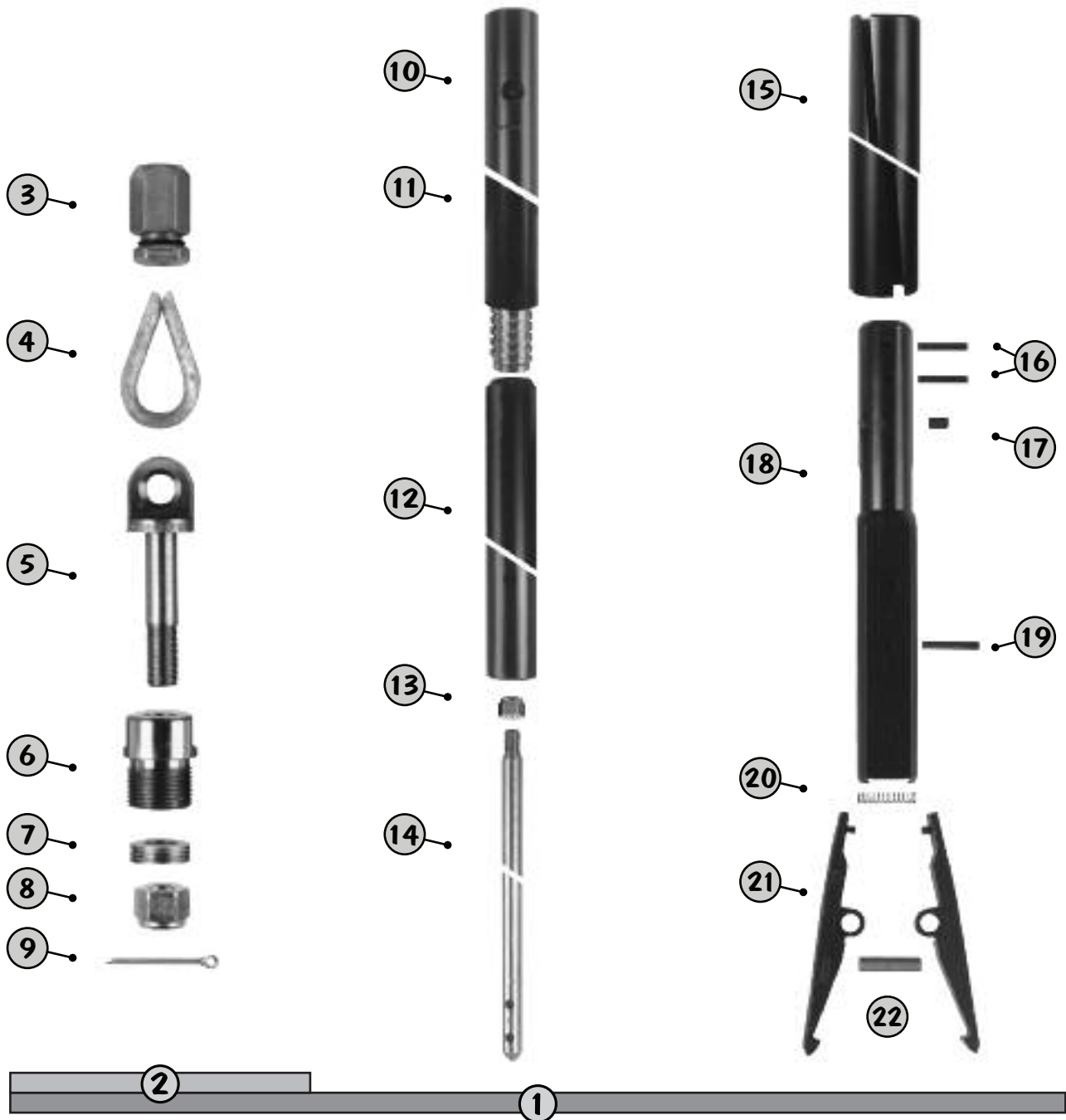
Ref. No.	Part No.		Description	Ref. No.	Part No.		Description
	5'	10'			5'	10'	
1	36149	36150	PW/L 3 Core barrel assembly	26	36170	36170	Spring retaining washer
2	36151	36152	Inner tube assembly	27	36171	36171	Self lock nut
3	36153	36153	Head assembly	28	36172	36172	Inner tube cap assembly
4	37079	37079	Bearing assembly	29	36024	36024	Grease fitting
5	36182	36182	Spearhead point	30	36173	36173	Steel ball
6	36181	36181	Pivot pin (.75" x 2.25")	31	36175	36175	Check valve body
7	36180	36180	Compression spring	32	36164	36164	Valve adjusting washer (3 req'd.)
8	36179	36179	Detent plunger	33	36166	36166	Ball thrust bearing (2 req'd.)
9	36178	36178	Spearhead base	34	36169	36169	Thrust bearing spacer (1 req'd.)
10	36176	36176	Latch retracting case	35	36174	36174	"O" ring
11	36159	36159	Latch body w/landing shoulder	36	36197	36197	Adapter
12	36160	36160	Landing shoulder	37	36198	36198	Piston plug
13	36177	36177	Spiral pin (2 req'd.) (.75" x 3.75")	38	36196	36196	"O" ring
14	36154	36154	Latch spring	39	36195	36195	Piston
15	36155	36155	Latch (2 req'd.)	40	36193	36194	Split tube liner
16	37012	37012	Spring pin (2 req'd.) (.5" x 2")	41	36183	36184	Inner tube
17	36156	36156	Latch support	42	36189	36189	Stop ring
18	37012	37012	Spring pin (.5" x 2.75")	43	36191	36191	Core lifter (Broached)
19	36161	36161	Lock nut	44	36188	36188	Core lifter case
20	36162	36162	Spindle assembly	45	36199	36199	Locking coupling (HWT)
21	36163	36163	Shut-off valve (2 req'd.)	46	36219	36219	Adapter coupling
22	36165	36165	Thrust bearing spacer (2 req'd.)	47	36220	36220	Landing ring
23	36167	36167	Spindle bearing w/cage	48	36221	36223	Outer tube
24	36165	36165	Thrust bearing spacer (2 req'd.)	49	36224	36224	IT stabilizer
25	36168	36168	Compression spring	50	36225	36225	Thread protector

**NOTE:** All barrels have HWT rod box connection.  
P W/L 3 Core barrel assembly does not include reamer shell or bit. (See Diamond Bit section)



## WIRELINE CORE BARRELS

### P W/L Overshot Assembly





## WIRELINE CORE BARRELS

### P W/L Overshot Assembly

Ref. No.	Part No.	Description
1	36226	P W/L Overhsot Assembly Complete
2	36227	Cable Swivel Assembly
3	36245	Cable clamp- Overshot
4	36228	Wire rope thimble (.3125")
5	36229	Eye bolt
6	36230	Cable swivel collar
7	36231	Needle thrust bearing
8	36232	Nut
9	36233	Cotter pin (.09375 x 1")
10	36024	Grease fitting
11	36234	Cable swivel body
12	36235	Jar tube weldment
13	36236	Self lock nut
14	36237	Jar staff
15	36238	Locking sleeve
16	36239	Spiral Pin (2 req'd.) (.3125" x 2")
17	36061	Set screw
18	36242	Overshot head
19	36241	Spring Pin (.25" x 3")
20	36244	Lifting dog spring
21	36243	Lifting dog (2 req'd.)
22	36240	Lifting dog pin (.5" x 1.9375")



<b>WIRELINE DRILL ROD</b>		
<b>N W/L</b>		
	<b>Part No.</b>	<b>Weight</b>
1 Ft.	30064	5.0 lb / 2.3 KG
2 Ft.	30065	9.7 lb / 4.4 KG
5 Ft.	30066	25.7 lb / 11.7 KG
10 Ft.	30067	51.4 lb / 23.3 KG

<b>N W/L ROD SPECIFICATIONS</b>			
<b>N W/L</b>			
<b>OD Tube</b>	<b>Tube Wall Thickness</b>	<b>ID Pin</b>	<b>Treads Per Inch</b>
2.75" / 69.9 mm	.188" / 9.6 mm	2.375" / 60.3 mm	3



WIRELINE DRILL ROD		
H W/L		
	Part No.	Weight
1 Ft.	30068	8.0 lb / 3.6 KG
2 Ft.	30069	15.6 lb / 7.0 KG
5 Ft.	30070	38.4 lb / 17.4 KG
10 Ft.	30071	76.7 lb / 34.8 KG

H W/L ROD SPECIFICATIONS			
H W/L			
OD Tube	Tube Wall Thickness	ID Pin	Treads Per Inch
3.5" / 88.9 mm	.219" / 11.1 mm	3.0625" / 77.8 mm	3



WIRELINE DRILL ROD		
HWT*		
	Part No.	Weight
1 Ft.	30084	12.0 lb / 5.4 KG
2 Ft.	30085	22.6 lb / 10.2 KG
5 Ft.	30086	56.5 lb / 25.4 KG
10 Ft.	30087	113 lb / 51.3 KG

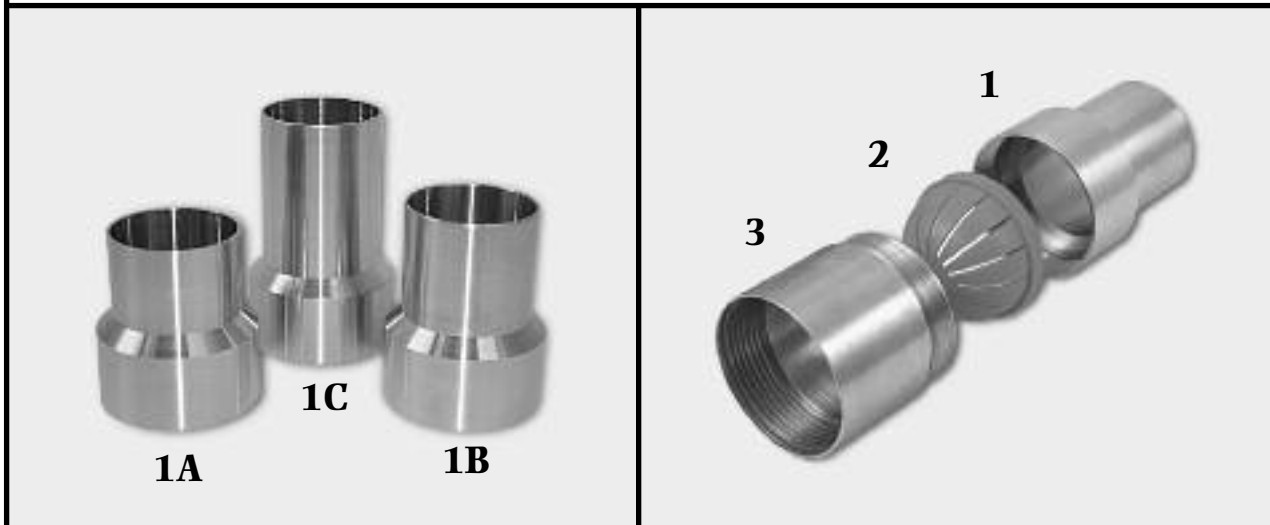
\* NOTE: HWT rod/casing is used as the Drill Rod for the P W/L Core Barrel.

HWT ROD SPECIFICATIONS			
HWT			
OD Tube	Tube Wall Thickness	ID Pin	Treads Per Inch
4.5" / 114.3 mm	.250" / 12.7 mm	4" / 101.6 mm	2.5


## PUNCH SHOES


Ref. No.	N W/L - NV	N W/L2 - NV2	H W/L - HV	P W/L - PV	Description
1A	36201	36251	36208	36214*	Punch Shoe Pilot 1.5"
1B	36202	36252	36209	36215*	Punch Shoe Pilot 2.0"
1C	36203	36253	36210	36216*	Punch Shoe Pilot 2.5"
2	36204	36254	36211	36217	Basket Retainer - Plastic
3	36200	36250	36206	36213	Punch Shoe Upper Blank

\* Note: P W/L Punch Shoe Pilots differ in length from other series. 1A = 1" • 1B = 1.75" • 1C = 3.5"  
 Punch Shoes available for other style Core Barrels. ( i.e. NXB • NWD - 4 • 94mm )





	WIRELINE DRILL ROD SUBS N W/L	
	BOX to PIN	
	Part No.	Weight
	AW - N W/L	30280 5.8 lb / 2.6 KG
	AWJ - N W/L	30305 5.8 lb / 2.6 KG
	NW - N W/L*	30385 5.2 lb / 2.3 KG
	NWJ - N W/L	30415 3.8 lb / 1.7 KG
<p><b>Note:</b> Pin end bored for latch mechanism.          Other combinations &amp; sizes of subs available.          * 6" Body length.</p>		

	WIRELINE DRILL ROD SUBS N W/L	
	BOX to BOX	
	Part No.	Weight
	N4 - N W/L	30201 5.4 lb / 2.4 KG
	N W/L - 2.375 API Reg. Box	34415 9.6 lb / 4.3 KG
N W/L - 2.875 API Reg. Box	34416 16.4 lb / 7.4 KG	




	<b>WIRELINE DRILL ROD SUBS</b>		
	<b>N W/L</b>		
	<b>PIN to PIN</b>		
		<b>Part No.</b>	<b>Weight</b>
	<b>AW - N W/L</b>	30459	6.0 lb / 2.7 KG
<b>NW - N W/L</b>	30513	4.8 lb / 2.1 KG	
<p><b>Note: Pin end bored for latch mechanism.</b>  <b>Other combinations &amp; sizes of subs available.</b></p>			




## WIRELINE DRILL ROD SUBS H W/L

### BOX to PIN


	Part No.	Weight
	AW - H W/L	30741 10.6 lb / 5.3 KG
	AWJ - H W/L	37200 10.6 lb / 5.3 KG
	NW - H W/L	34414 9.4 lb / 4.2 KG
	NW - H W/L*	37201 10.6 lb / 5.3 KG
	NWJ - H W/L	30775 10.6 lb / 5.3 KG
	2.375 API IF - H W/L	30592 8.2 lb / 3.7 KG
	NW Casing - H W/L	37240 4.0 lb / 1.8 KG
	H W/L - NW Casing	37239 5.0 lb / 2.2 KG
	H W/L - HW Casing	30771 12.6 lb / 5.7 KG
	<p>Note: Pin end bored for latch mechanism.            Other combinations &amp; sizes of subs available.            * 6" Body length.</p>	


## WIRELINE DRILL ROD SUBS H W/L

### BOX to BOX

	Part No.	Weight
	H W/L - 2.375 API Reg. Box	37243 12.4 lb / 6.2 KG
	H W/L - 2.875 API Reg. Box	37244 14.6 lb / 6.6 KG
	H W/L - 3.500 API Reg. Box	37245 21.8 lb / 9.9 KG
	H W/L - 4.500 API Reg. Box	37246 34.2 lb / 15.5 KG



	<b>WIRELINER DRILL ROD SUBS</b>		
	<b>H W/L</b>		
	<b>PIN to PIN</b>		
		<b>Part No.</b>	<b>Weight</b>
	<b>AW - H W/L</b>	37242	9.6 lb / 4.3 KG
<b>NW - H W/L</b>	37202	9.2 lb / 4.1 KG	
<p><b>Note:</b> Pin end bored for latch mechanism. Other combinations &amp; sizes of subs available.</p>			

<b>SUBS - FLUSH JOINT CASING</b>		
<b>BOX to PIN</b>		
	<b>Part No.</b>	<b>Description</b>
	30274	<b>AW Rod - NW Casing</b>
	30299	<b>AWJ Rod - NW Casing</b>
	30377	<b>NW Rod - NW Casing</b>
	30407	<b>NWJ Rod - NW Casing</b>
	30378	<b>NW Rod - HW Casing</b>
	30408	<b>NWJ Rod - HW Casing</b>
	30379	<b>NW Rod - HWT Casing</b>
	30380	<b>NWJ Rod - HWT Casing</b>
	<p><b>Note:</b> HWT Casing is not interchangeable with HW series casing. HWT rod/casing is used as the Drill Rod for the P W/L Core Barrel.</p>	



<b>CASING</b>					
<b>W SERIES - FLUSH JOINT</b>					
<b>BW</b>			<b>NW</b>		
	<b>Part No.</b>	<b>Weight</b>		<b>Part No.</b>	<b>Weight</b>
1 Ft.	30072	7.0 lb / 3.1 KG	1 Ft.	30076	9.0 lb / 4.1 KG
2 Ft.	30073	14.0 lb / 6.3 KG	2 Ft.	30077	17.0 lb / 7.7 KG
5 Ft.	30074	35.0 lb / 15.9 KG	5 Ft.	30078	43.0 lb / 19.5 KG
10 Ft.	30075	70.0 lb / 31.8 KG	10 Ft.	30079	86.0 lb / 39.1 KG
<b>HW</b>			<b>PW</b>		
	<b>Part No.</b>	<b>Weight</b>		<b>Part No.</b>	<b>Weight</b>
1 Ft.	30080	12.0 lb / 5.4 KG	1 Ft.	30000	15.0 lb / 6.8 KG
2 Ft.	30081	23.0 lb / 10.4 KG	2 Ft.	30001	29.0 lb / 13.1 KG
5 Ft.	30082	58.0 lb / 26.3 KG	5 Ft.	30002	70.0 lb / 31.8 KG
10 Ft.	30083	117.0 lb / 53.1 KG	10 Ft.	30003	144.0 lb / 65.4 KG
<b>SW</b>			<b>UW</b>		
	<b>Part No.</b>	<b>Weight</b>		<b>Part No.</b>	<b>Weight</b>
1 Ft.	30088	20.0 lb / 9.1 KG	1 Ft.	30092	23.0 lb / 10.4 KG
2 Ft.	30089	40.0 lb / 18.1 KG	2 Ft.	30093	46.0 lb / 20.9 KG
5 Ft.	30090	100.0 lb / 45.4 KG	5 Ft.	30094	117.0 lb / 53.1 KG
10 Ft.	30091	200.0 lb / 90.9 KG	10 Ft.	30095	234.0 lb / 106.3 KG
<b>ZW</b>					
	<b>Part No.</b>	<b>Weight</b>			
1 Ft.	30096	24.0 lb / 10.9 KG			
2 Ft.	30097	48.0 lb / 21.8 KG			
5 Ft.	30098	119.0 lb / 54.0 KG			
10 Ft.	30099	238.0 lb / 108.1 KG			

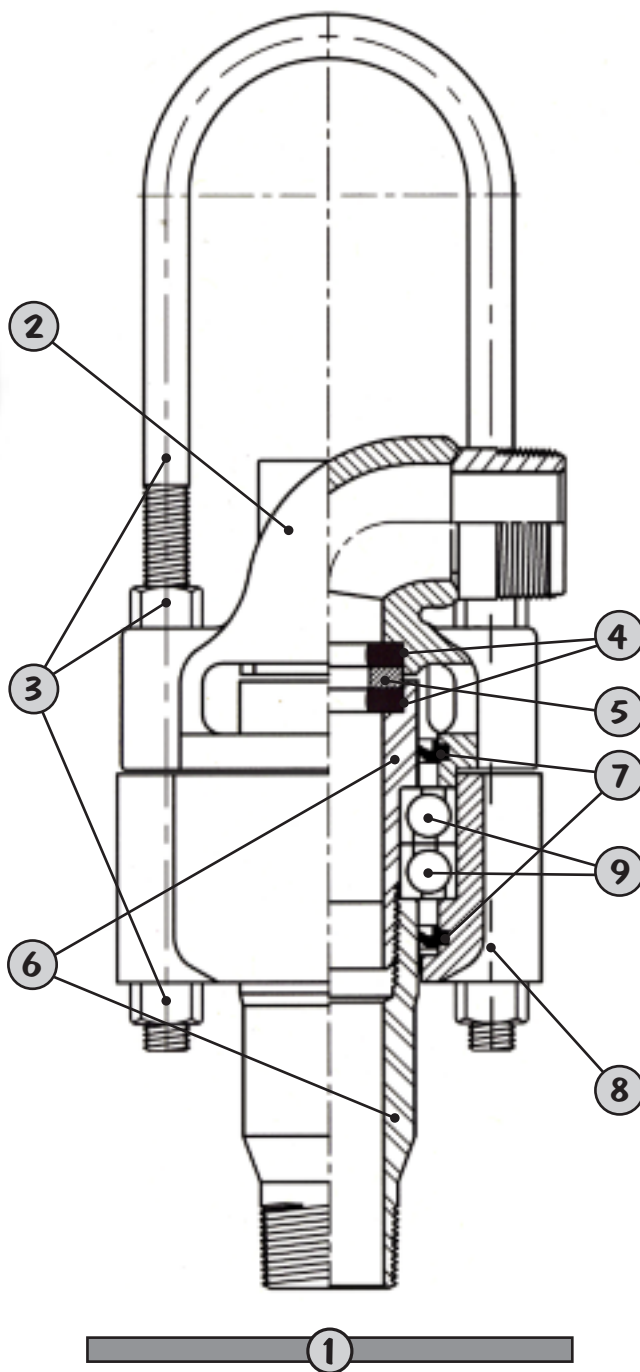


<b>CASING W SERIES - SPECIFICATIONS</b>			
<b>BW</b>			
OD Of Casing	Tube Wall Thickness	ID Of Casing	Treads Per Inch
2.875" / 73.0 mm	.250" / 12.7 mm	2.375" / 60.3 mm	4
<b>NW</b>			
OD Of Casing	Tube Wall Thickness	ID Of Casing	Treads Per Inch
3.5" / 88.9 mm	.250" / 12.7 mm	3.0" / 76.2 mm	4
<b>HW</b>			
OD Of Casing	Tube Wall Thickness	ID Of Casing	Treads Per Inch
4.5" / 114.3 mm	.250" / 12.7 mm	4.0" / 101.6 mm	4
<b>PW</b>			
OD Of Casing	Tube Wall Thickness	ID Of Casing	Treads Per Inch
5.5" / 139.7 mm	.250" / 12.7 mm	5.0" / 127.0 mm	3
<b>SW</b>			
OD Of Casing	Tube Wall Thickness	ID Of Casing	Treads Per Inch
6.625" / 168.3 mm	.312" / 15.9 mm	6.0" / 152.4 mm	3
<b>UW</b>			
OD Of Casing	Tube Wall Thickness	ID Of Casing	Treads Per Inch
7.625" / 193.7 mm	.312" / 15.9 mm	7.0" / 177.8 mm	2
<b>ZW</b>			
OD Of Casing	Tube Wall Thickness	ID Of Casing	Treads Per Inch
8.625" / 219.1 mm	.312" / 15.9 mm	8.0" / 203.2 mm	2



## Water Swivel

1 J

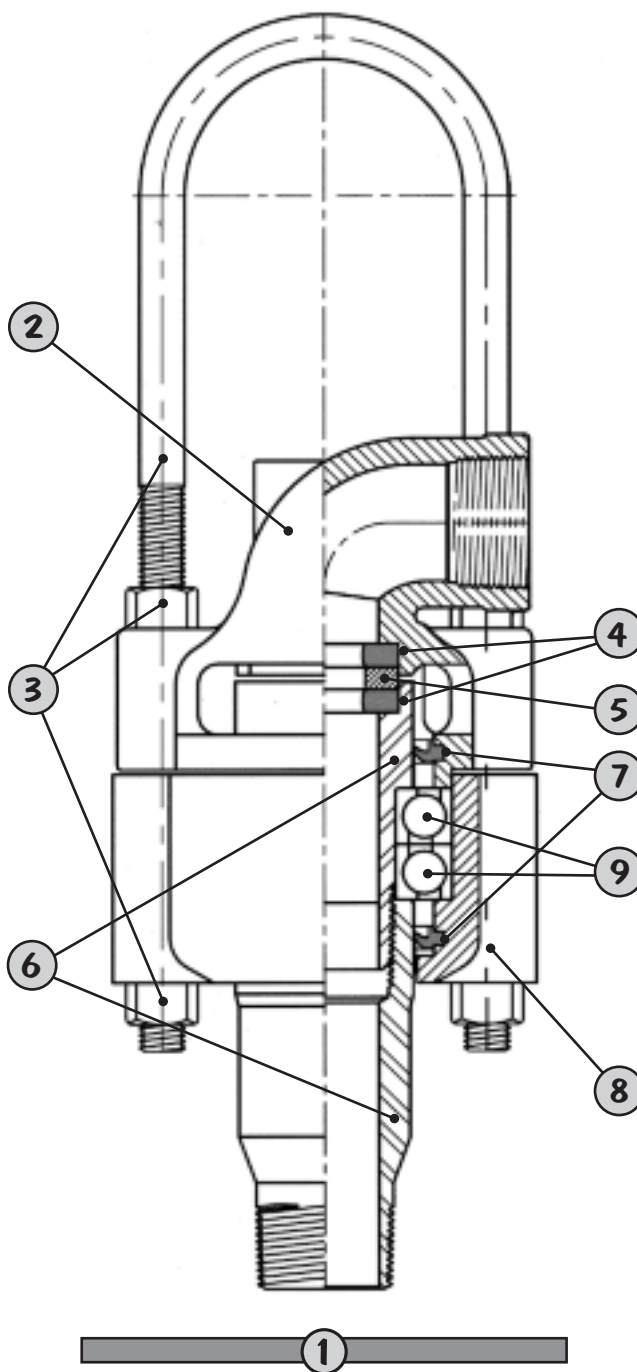






## Water Swivel

2 J

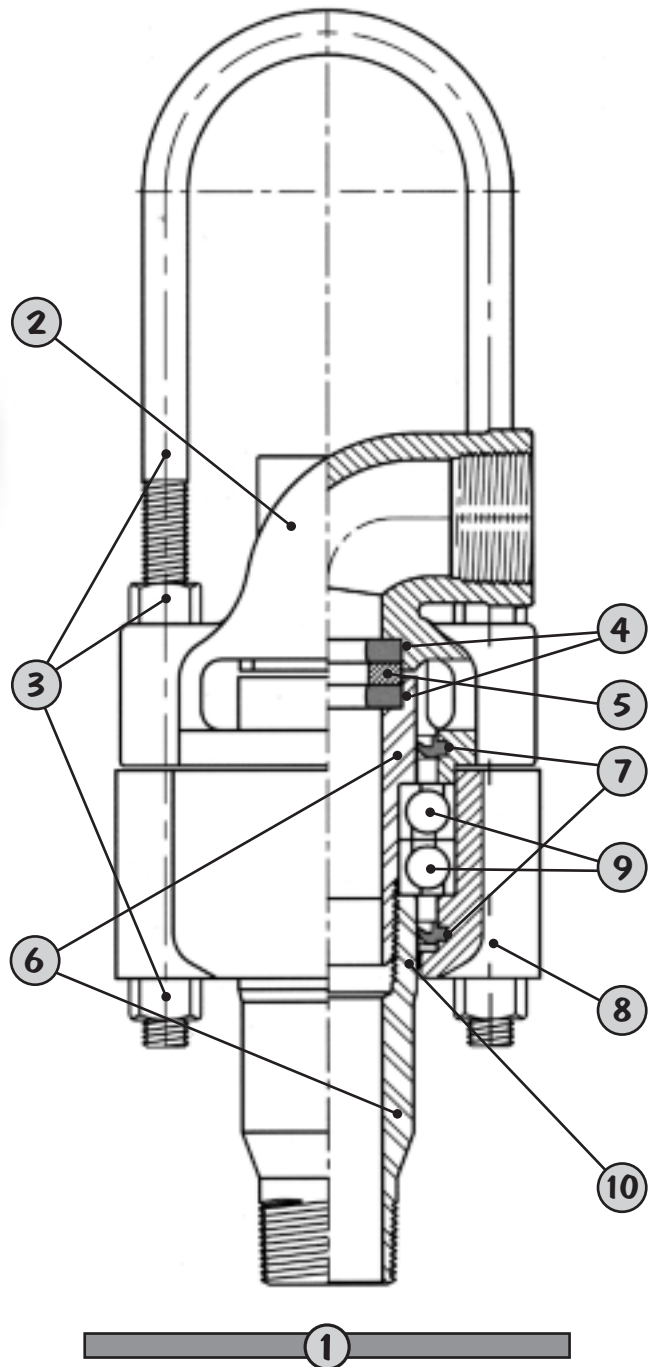






## Water Swivel

3 J





## Water Swivel

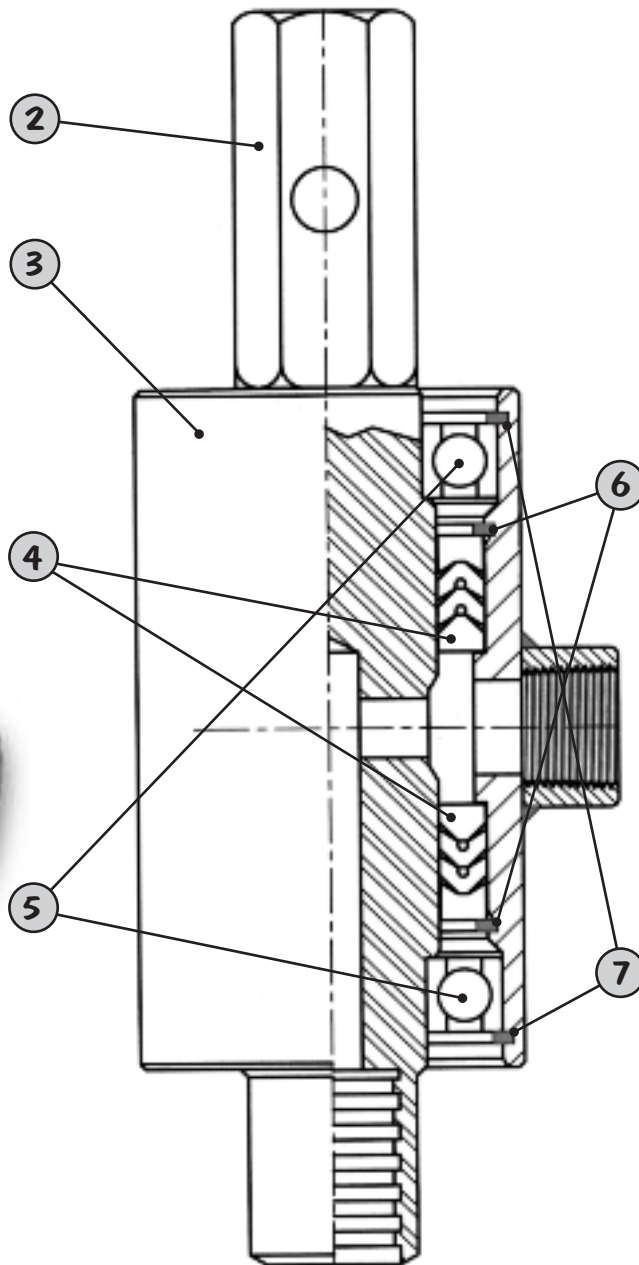
### 3 J

Ref. No.	Part No.	Description
1	31069	Swivel, Iron, 2" female NPT hose connection with 2" NPT LH pin lower connection
1	31064	Swivel, Iron, 2" female NPT hose connection with CMK 6V LH pin lower connection
2	31037	Gooseneck, 2" female NPT
3	31038	Bail with nuts
4	30904	Packing (2 req'd.)
4	31035	Packing, 90 Duro (2 req'd.) Air
4	31139	Packing, Viton (2 req'd.)
5	30905	Wearbushing
6	31128	Bearing Spindle Shaft 3J with 2" NPT LH pin lower connection (Mated set)
6	31129	Bearing Spindle Shaft 3J with CMK 6V LH pin lower connection (Mated set)
7	30908	Housing Seals (2 req'd.)
8	30909	Bearing Housing
9	30910	Bearings (2 req'd.)
10	30912	Spindle Thread Seal



## Side Feed Swivel

AW

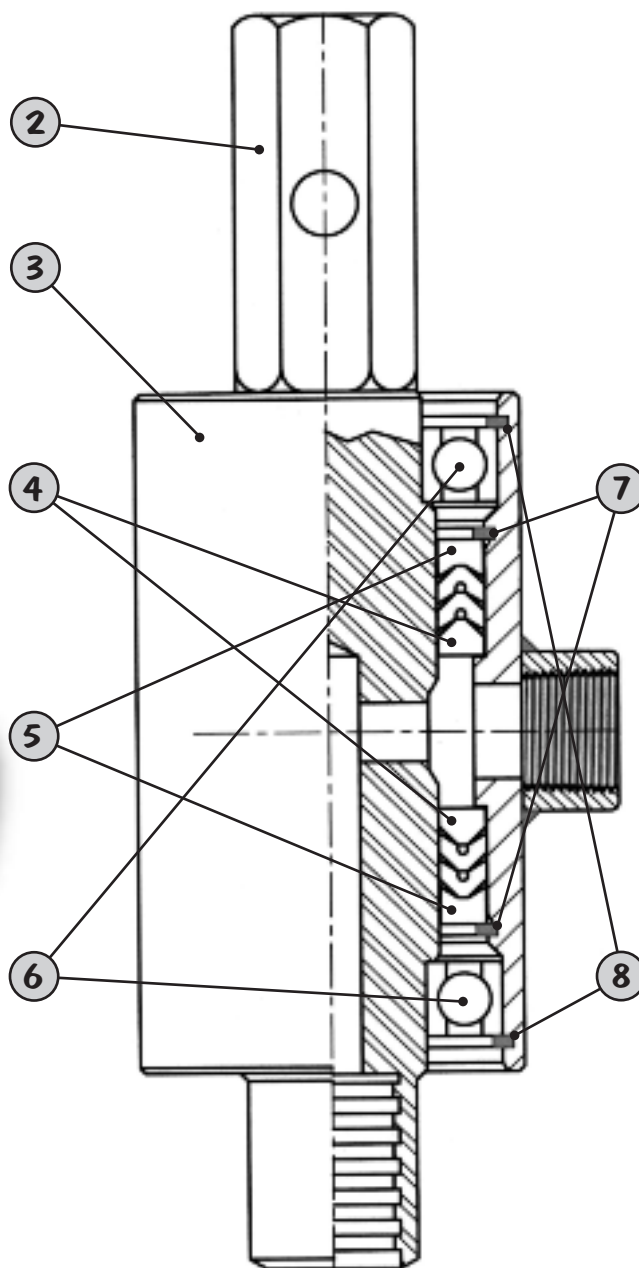






## Side Feed Swivel

NW







## KWIK KLAMP

Part No.	Description
32459	Kwik Klamp (1.25" to 2.625" - 3,500 lbs. capacity)
32460	Jaw w/screws (2 Req'd)



## KWIK KLAMP 2

Part No.	Description
32461	Kwik Klamp 2 (2.5" to 4.5" - 7,000 lbs. capacity)
32464	Gripper Carbide Tipped (16 Req'd)



## FOOT CLAMP

Ref. No.	Part No.	Description
1	32474	Foot Clamp, 5" x 5" (Jaw set not included)
2	32475	Jaw set, 2.75" OD tube (N W/L Rod)
3	32476	Jaw set, 3.5" OD tube (H W/L Rod, NW Casing)
4	32477	Jaw set, 4.5" OD tube (HW Casing, HWT Casing)

**Note:** Other Jaw Set sizes available upon request.

**1**



**2**



**3**



**4**



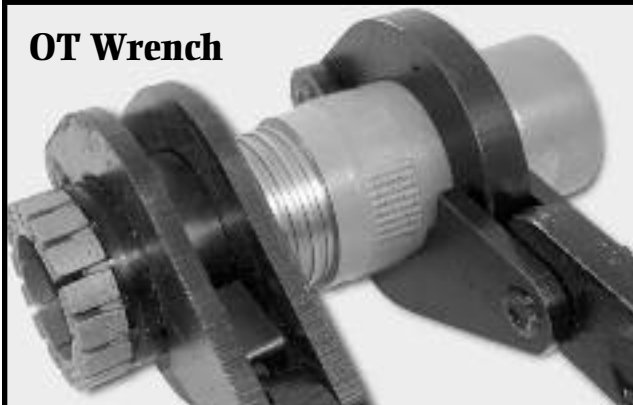


## WRENCHES - FULL CIRCLE GRIP

Part No.	Description
36085	Wrench, OT, N W/L, NXB, NWD4
36086	Wrench, IT, N W/L & Case
36087	Wrench, IT, N W/L 2 & Case
36088	Wrench, IT, NWD4
36089	Wrench, IT, Shoe, NWD4
36097	Wrench, OT, H W/L
36098	Wrench Bit / Shell H W/L
36099	Wrench, IT, H W/L use 36085
36127	Wrench, OT / Bit, P W/L
36128	Wrench, IT, P W/L use 36098

**Note:** Other Wrench sizes available upon request.






### OT Wrench



### IT Wrench





<b>CORE BOXES - WAXED CARDBOARD</b>			
<b>N</b>		<b>H</b>	
Part No.	Description	Part No.	Description
36312	Core Box - One Piece (Divider not included)	36314	Core Box - One Piece (Divider not included)
36313	Divider for One Piece Core Box	36315	Divider for One Piece Core Box
			
			
Core capacity - 10'		Packaged 25 per Bundle	
<b>P</b>			
Part No.	Description		
36316	Core Box - One Piece (Divider included)		
			
Core capacity - 5'		Packaged 20 per Bundle	
<p>Note: Wooden Core Boxes available in a variety of sizes.</p>			



## LUBRICANTS

Part No.	Description	Size
212291	KOPR-KOTE ( Heavy Duty Drill Pipe Compound )	1 gal. pail
212292	KOPR-KOTE ( Heavy Duty Drill Pipe Compound )	2 gal. pail
212299	KOPR-KOTE ( Heavy Duty Drill Pipe Compound )	14oz. cartridge
212297	Dope Brush	1.125" x 16"



## INSTA-VIS PLUS



Part No.	Description	Size
214025	Liquid drilling fluid polymer	5 gal. pail

**Note:** Also available by the pallet. (32 pails per pallet)